

**Family First Prevention Services Act (FFPSA)
Bubble Chart Data Packet
Supplemental Tables**

Table 1. Number of unique children with movements into CC program in 2019 and their movement types.

	# Movements	# Unique Children	Movement Types*									
			New Admission(s) Only		Step Up(s) Only		Lateral Transfer(s) Only		Return(s) from Absence / TD Only		Two or More Movement Types	
			N	%	N	%	N	%	N	%	N	%
Total	4,674	3,410	1,331	39%	445	13%	832	24%	249	7%	553	16%
New York City	1,978	1,405	533	38%	94	7%	403	29%	195	14%	180	13%
Rest of State	2,696	2,005	798	40%	351	18%	429	21%	54	3%	373	19%
Buffalo Region	480	372	167	45%	65	17%	64	17%	13	3%	63	17%
Rochester Region	227	181	59	33%	40	22%	45	25%	2	1%	35	19%
Syracuse Region	541	412	159	39%	73	18%	90	22%	6	1%	84	20%
Albany Region	466	360	137	38%	75	21%	81	23%	10	3%	57	16%
Westchester region	982	680	276	41%	98	14%	149	22%	23	3%	134	20%

*Percentage is calculated based on # unique children.

Prepared by OCFS Bureau of Research, Evaluation, and Performance Analytics; Data extracted from CONNECTIONS on 3/3/2021

Supplemental Table 1. New Admissions into Congregate Care in 2019 by Status at 1 Year Post CC Entry—Syracuse Region

	Remained in CC Program		Discharged from Custody		Stepped Down to Lower Level of Care		Transferred to Another CC Facility/Program		Total	
	#	%	#	%	#	%	#	%	#	%
Total	59	27%	67	31%	77	36%	12	6%	215	100%
Demographics										
Gender										
Female	13	22%	21	31%	27	35%	2	17%	63	29%
Male	46	78%	46	69%	50	65%	10	83%	152	71%
Race/Ethnicity										
White/Caucasian	35	59%	31	46%	50	65%	7	58%	123	57%
Black/African American	12	20%	18	27%	13	17%	2	17%	45	21%
Hispanic/Latino	4	7%	10	15%	5	6%	1	8%	20	9%
Other	0	0%	3	4%	1	1%	0	0%	4	2%
Unknown	8	14%	5	7%	8	10%	2	17%	23	11%
Age at Entry into CC										
< 2	0	0%	1	1%	1	1%	0	0%	2	1%
2 - 5	0	0%	2	3%	1	1%	0	0%	3	1%
6 - 9	0	0%	3	4%	10	13%	0	0%	13	6%
10 - 12	5	8%	7	10%	8	10%	1	8%	21	10%
13	11	19%	6	9%	10	13%	2	17%	29	13%
14	11	19%	10	15%	11	14%	6	50%	38	18%
15	17	29%	18	27%	15	19%	0	0%	50	23%
16	14	24%	13	19%	17	22%	3	25%	47	22%
17+	1	2%	7	10%	4	5%	0	0%	12	6%
Current Movement into CC										
Facility upon Entry into CC										
Institution	48	81%	53	79%	52	68%	12	100%	165	77%
Group Residence	0	0%	2	3%	2	3%	0	0%	4	2%
Group Home	10	17%	11	16%	23	30%	0	0%	44	20%
AOBH	1	2%	1	1%	0	0%	0	0%	2	1%
Case Type										
CW	27	46%	25	37%	39	51%	2	17%	93	43%
JD	24	41%	32	48%	27	35%	9	75%	92	43%
PINS	8	14%	10	15%	11	14%	1	8%	30	14%
Previous History										
Any Prior FC Placement (Lifetime)										
No	38	64%	49	73%	64	83%	10	83%	161	75%
Yes	21	36%	18	27%	13	17%	2	17%	54	25%
Any Prior CC experience (Lifetime)										
No	44	75%	51	76%	73	95%	10	83%	178	83%
Yes	15	25%	16	24%	4	5%	2	17%	37	17%
Outcome										
Time To Exit / Transfer in 12-Month Followup¹										
Exited within 30 Days	N/A	N/A	14	21%	22	29%	0	0%	36	23%
Exited between 30 and 60 Days	N/A	N/A	3	4%	5	6%	1	8%	9	6%
Exited between 61 and 365 Days	N/A	N/A	50	75%	50	65%	11	92%	111	71%
Exit Type										
Discharged from Custody										
Discharged to Permanency (Return to Parent, Relative, Adoption)	N/A	N/A	54	81%	N/A	N/A	N/A	N/A	N/A	N/A
Discharged to Adult Corrections/OCFS/Other JD Placement	N/A	N/A	10	15%	N/A	N/A	N/A	N/A	N/A	N/A
Other (e.g., Adulthood obtained, AWOL, Entered OMH Facility, etc.)	N/A	N/A	3	4%	N/A	N/A	N/A	N/A	N/A	N/A
Stepped down into lower level of care										
Certified Foster Home	N/A	N/A	N/A	N/A	4	5%	N/A	N/A	N/A	N/A
Approved Relative Foster Home	N/A	N/A	N/A	N/A	8	10%	N/A	N/A	N/A	N/A
Foster/Adoptive Home	N/A	N/A	N/A	N/A	23	30%	N/A	N/A	N/A	N/A
Missing Facility Information	N/A	N/A	N/A	N/A	0	0%	N/A	N/A	N/A	N/A
Trial Discharge	N/A	N/A	N/A	N/A	42	55%	N/A	N/A	N/A	N/A
Transferred to another CC facility / program										
Institution	N/A	N/A	N/A	N/A	N/A	N/A	10	83%	N/A	N/A
Group Residence	N/A	N/A	N/A	N/A	N/A	N/A	0	0%	N/A	N/A
Group Home	N/A	N/A	N/A	N/A	N/A	N/A	0	0%	N/A	N/A
AOBH	N/A	N/A	N/A	N/A	N/A	N/A	1	8%	N/A	N/A
Others ²	N/A	N/A	N/A	N/A	N/A	N/A	1	8%	N/A	N/A

Notes:

1. Percentage in the "Total" columns is calculated based on total number of exit/transfer, excluding children remained in CC facility/program.

2. Other may include: ACS' Children Center, Non-secure/Secure Detention Center, Psychiatric Center, Residential Treatment Facility, and Runaway Shelter.

Prepared by OCFS Bureau of Research, Evaluation, and Performance Analytics; Data extracted from CONNECTIONS on 3/3/2021

Supplemental Table 2. Step-Ups into Congregate Care in 2019 by Status at 1 Year Post CC Entry--Syracuse Region

	Remained in CC Program		Discharged from Custody		Stepped Down to Lower Level of Care		Transferred to Another CC Facility/Program		Total	
	#	%	#	%	#	%	#	%	#	%
Total	45	38%	10	8%	44	37%	19	16%	118	100%
Demographics										
Gender										
Female	26	58%	4	40%	22	50%	6	32%	58	49%
Male	19	42%	6	60%	22	50%	13	68%	60	51%
Race/Ethnicity										
White/Caucasian	26	58%	7	70%	28	64%	14	74%	75	64%
Black/African American	5	11%	2	20%	6	14%	3	16%	16	14%
Hispanic/Latino	3	7%	0	0%	5	11%	1	5%	9	8%
Other	0	0%	0	0%	0	0%	0	0%	0	0%
Unknown	11	24%	1	10%	5	11%	1	5%	18	15%
Age at Entry into CC										
< 2	0	0%	0	0%	0	0%	0	0%	0	0%
2 - 5	0	0%	0	0%	2	5%	0	0%	2	2%
6 - 9	5	11%	1	10%	6	14%	6	32%	18	15%
10 - 12	6	13%	2	20%	10	23%	7	37%	25	21%
13	6	13%	3	30%	5	11%	1	5%	15	13%
14	12	27%	0	0%	6	14%	1	5%	19	16%
15	6	13%	1	10%	6	14%	1	5%	14	12%
16	7	16%	2	20%	7	16%	1	5%	17	14%
17+	3	7%	1	10%	2	5%	2	11%	8	7%
Current Movement into CC										
Facility upon Entry into CC										
Institution	32	71%	9	90%	25	57%	11	58%	77	65%
Group Residence	1	2%	0	0%	0	0%	2	11%	3	3%
Group Home	10	22%	1	10%	19	43%	6	32%	36	31%
AOBH	2	4%	0	0%	0	0%	0	0%	2	2%
Case Type										
CW	39	87%	9	90%	42	95%	18	95%	108	92%
JD	2	4%	0	0%	0	0%	0	0%	2	2%
PINS	4	9%	1	10%	2	5%	1	5%	8	7%
Previous History										
Any Prior FC Placement (Lifetime)										
No	32	71%	8	80%	28	64%	16	84%	84	71%
Yes	13	29%	2	20%	16	36%	3	16%	34	29%
Any Prior CC experience (Lifetime)										
No	20	44%	8	80%	19	43%	11	58%	58	49%
Yes	25	56%	2	20%	25	57%	8	42%	60	51%
Facility Prior to Movement into Current CC										
Certified Foster Home	14	31%	5	50%	11	25%	5	26%	35	30%
Approved Relative Foster Home	7	16%	2	20%	4	9%	2	11%	15	13%
Foster/Adoptive Home	24	53%	2	20%	29	66%	12	63%	67	57%
Adoption Subsidy Home	0	0%	1	10%	0	0%	0	0%	1	1%
Unknown	0	0%	0	0%	0	0%	0	0%	0	0%
Length of Time in Foster Care										
< 1 Month	8	18%	4	40%	6	14%	6	32%	24	20%
1-3 Months	6	13%	3	30%	8	18%	8	42%	25	21%
4-6 Months	4	9%	1	10%	5	11%	0	0%	10	8%
7-9 Months	3	7%	0	0%	3	7%	0	0%	6	5%
10-12 Months	4	9%	1	10%	4	9%	1	5%	10	8%
13-15 Months	2	4%	0	0%	1	2%	0	0%	3	3%
16-18 Months	3	7%	0	0%	0	0%	2	11%	5	4%
19-21 Months	2	4%	1	10%	2	5%	0	0%	5	4%
22-24 Months	3	7%	0	0%	2	5%	0	0%	5	4%
25+ Months	10	22%	0	0%	13	30%	2	11%	25	21%
Length of Time in Previous Facility										
< 1 Month	18	40%	6	60%	10	23%	11	58%	45	38%
1-3 Months	15	33%	2	20%	18	41%	7	37%	42	36%
4-6 Months	2	4%	0	0%	5	11%	0	0%	7	6%
7-9 Months	4	9%	1	10%	5	11%	0	0%	10	8%
10-12 Months	2	4%	1	10%	2	5%	1	5%	6	5%
13-15 Months	0	0%	0	0%	2	5%	0	0%	2	2%
16-18 Months	1	2%	0	0%	0	0%	0	0%	1	1%
19-21 Months	3	7%	0	0%	0	0%	0	0%	3	3%
22-24 Months	0	0%	0	0%	1	2%	0	0%	1	1%
25+ Months	0	0%	0	0%	1	2%	0	0%	1	1%
Outcome										
Time To Exit / Transfer in 12-Month Followup¹										
Exited within 30 Days	N/A	N/A	0	0%	19	43%	1	5%	20	27%
Exited between 30 and 60 Days	N/A	N/A	1	10%	8	18%	0	0%	9	12%
Exited between 61 and 365 Days	N/A	N/A	9	90%	17	39%	18	95%	44	60%
Exit Type										
Discharged from Custody										
Discharged to Permanency (Return to Parent, Relative, Adoption)	N/A	N/A	7	70%	N/A	N/A	N/A	N/A	N/A	N/A
Discharged to Adult Corrections/OCFS/Other JD Placement	N/A	N/A	2	20%	N/A	N/A	N/A	N/A	N/A	N/A
Other (e.g., Adulthood obtained, AWOL, Entered OMH Facility, etc.)	N/A	N/A	1	10%	N/A	N/A	N/A	N/A	N/A	N/A
Stepped down into lower level of care										
Certified Foster Home	N/A	N/A	N/A	N/A	10	23%	N/A	N/A	N/A	N/A
Approved Relative Foster Home	N/A	N/A	N/A	N/A	8	18%	N/A	N/A	N/A	N/A
Foster/Adoptive Home	N/A	N/A	N/A	N/A	19	43%	N/A	N/A	N/A	N/A
Missing Facility Information	N/A	N/A	N/A	N/A	0	0%	N/A	N/A	N/A	N/A
Trial Discharge	N/A	N/A	N/A	N/A	7	16%	N/A	N/A	N/A	N/A
Transferred to another CC facility / program										
Institution	N/A	N/A	N/A	N/A	N/A	N/A	12	63%	N/A	N/A
Group Residence	N/A	N/A	N/A	N/A	N/A	N/A	0	0%	N/A	N/A
Group Home	N/A	N/A	N/A	N/A	N/A	N/A	4	21%	N/A	N/A
AOBH	N/A	N/A	N/A	N/A	N/A	N/A	0	0%	N/A	N/A
Others ²	N/A	N/A	N/A	N/A	N/A	N/A	3	16%	N/A	N/A

Notes:
 1. Percentage in the "Total" columns is calculated based on total number of exit/transfer, excluding children remained in CC facility/program.
 2. Other may include: ACS' Children Center, Non-secure/Secure Detention Center, Psychiatric Center, Residential Treatment Facility, and Runaway Shelter.
 Prepared by OCFs Bureau of Research, Evaluation, and Performance Analytics; Data extracted from CONNECTIONS on 3/3/2021

Supplemental Table 3. Lateral Movements into Congregate Care in 2019 by Status at 1 Year Post CC Entry--Syracuse Region

	Remained in CC Program		Discharged from Custody		Stepped Down to Lower Level of Care		Transferred to Another CC Facility/Program		Total	
	#	%	#	%	#	%	#	%	#	%
Total	65	33%	53	27%	50	26%	27	14%	195	100%
Demographics										
Gender										
Female	28	43%	19	36%	18	36%	10	37%	75	38%
Male	37	57%	34	64%	32	64%	17	63%	120	62%
Race/Ethnicity										
White/Caucasian	40	62%	33	62%	37	74%	17	63%	127	65%
Black/African American	12	18%	6	11%	6	12%	3	11%	27	14%
Hispanic/Latino	3	5%	5	9%	3	6%	0	0%	11	6%
Other	0	0%	0	0%	0	0%	0	0%	0	0%
Unknown	10	15%	9	17%	4	8%	7	26%	30	15%
Age at Lateral Transfer										
< 2	0	0%	0	0%	0	0%	0	0%	0	0%
2 - 5	0	0%	0	0%	0	0%	0	0%	0	0%
6 - 9	1	2%	1	2%	2	4%	0	0%	4	2%
10 - 12	6	9%	2	4%	7	14%	4	15%	19	10%
13	8	12%	4	8%	9	18%	2	7%	23	12%
14	7	11%	7	13%	3	6%	2	7%	19	10%
15	20	31%	16	30%	9	18%	6	22%	51	26%
16	13	20%	13	25%	11	22%	8	30%	45	23%
17+	10	15%	10	19%	9	18%	5	19%	34	17%
Current Movement into CC										
Facility upon Entry into CC										
Institution	42	65%	42	79%	35	70%	22	81%	141	72%
Group Residence	0	0%	0	0%	1	2%	0	0%	1	1%
Group Home	12	18%	6	11%	12	24%	4	15%	34	17%
AOBH	11	17%	5	9%	2	4%	1	4%	19	10%
Case Type										
CW	47	72%	23	43%	36	72%	15	56%	121	62%
JD	10	15%	17	32%	9	18%	8	30%	44	23%
PINS	8	12%	13	25%	5	10%	4	15%	30	15%
Previous History										
Any Prior FC Placement (Lifetime)										
No	38	58%	38	72%	36	72%	21	78%	133	68%
Yes	27	42%	15	28%	14	28%	6	22%	62	32%
Any Prior CC experience (Lifetime)										
No	0	0%	6	11%	3	6%	2	7%	11	6%
Yes	65	100%	47	89%	47	94%	25	93%	184	94%
Facility Prior to Movement into Current CC										
Institution	44	68%	39	74%	33	66%	16	59%	132	68%
Group Residence	0	0%	0	0%	0	0%	0	0%	0	0%
Group Home	10	15%	4	8%	10	20%	6	22%	30	15%
AOBH	7	11%	0	0%	0	0%	2	7%	9	5%
ACS' Children Center	0	0%	0	0%	0	0%	0	0%	0	0%
Others ¹	4	6%	10	19%	7	14%	3	11%	24	12%
Length of Time in Foster Care										
< 1 Month	5	8%	9	17%	4	8%	3	11%	21	11%
1-3 Months	8	12%	7	13%	2	4%	3	11%	20	10%
4-6 Months	9	14%	11	21%	6	12%	5	19%	31	16%
7-9 Months	6	9%	4	8%	5	10%	4	15%	19	10%
10-12 Months	6	9%	6	11%	2	4%	1	4%	15	8%
13-15 Months	2	3%	5	9%	7	14%	1	4%	15	8%
16-18 Months	2	3%	4	8%	4	8%	1	4%	11	6%
19-21 Months	4	6%	0	0%	4	8%	2	7%	10	5%
22-24 Months	3	5%	2	4%	2	4%	0	0%	7	4%
25+ Months	20	31%	5	9%	14	28%	7	26%	46	24%
Length of Time in Previous Facility										
< 1 Month	13	20%	15	28%	8	16%	5	19%	41	21%
1-3 Months	17	26%	13	25%	13	26%	12	44%	55	28%
4-6 Months	15	23%	9	17%	9	18%	7	26%	40	21%
7-9 Months	7	11%	6	11%	8	16%	1	4%	22	11%
10-12 Months	5	8%	5	9%	3	6%	1	4%	14	7%
13-15 Months	2	3%	3	6%	3	6%	1	4%	9	5%
16-18 Months	2	3%	0	0%	2	4%	0	0%	4	2%
19-21 Months	1	2%	0	0%	2	4%	0	0%	3	2%
22-24 Months	1	2%	1	2%	1	2%	0	0%	3	2%
25+ Months	2	3%	1	2%	1	2%	0	0%	4	2%
Outcome										
Time To Exit / Transfer in 12-Month Followup¹										
Exited within 30 Days	N/A	N/A	2	4%	2	4%	2	7%	6	5%
Exited between 30 and 60 Days	N/A	N/A	5	9%	2	4%	2	7%	9	7%
Exited between 61 and 365 Days	N/A	N/A	46	87%	46	92%	23	85%	115	88%
Exit Type										
Discharged from Custody										
Discharged to Permanency (Return to Parent, Relative, Adoption)	N/A	N/A	42	79%	N/A	N/A	N/A	N/A	N/A	N/A
Discharged to Adult Corrections/OCFS/Other JD Placement	N/A	N/A	6	11%	N/A	N/A	N/A	N/A	N/A	N/A
Other (e.g., Adulthood obtained, AWOL, Entered OMH Facility, etc.)	N/A	N/A	5	9%	N/A	N/A	N/A	N/A	N/A	N/A
Stepped down into lower level of care										
Certified Foster Home	N/A	N/A	N/A	N/A	6	12%	N/A	N/A	N/A	N/A
Approved Relative Foster Home	N/A	N/A	N/A	N/A	3	6%	N/A	N/A	N/A	N/A
Foster/Adoptive Home	N/A	N/A	N/A	N/A	8	16%	N/A	N/A	N/A	N/A
Missing Facility Information	N/A	N/A	N/A	N/A	0	0%	N/A	N/A	N/A	N/A
Trial Discharge	N/A	N/A	N/A	N/A	33	66%	N/A	N/A	N/A	N/A
Transferred to another CC facility / program										
Institution	N/A	N/A	N/A	N/A	N/A	N/A	12	44%	N/A	N/A
Group Residence	N/A	N/A	N/A	N/A	N/A	N/A	0	0%	N/A	N/A
Group Home	N/A	N/A	N/A	N/A	N/A	N/A	6	22%	N/A	N/A
AOBH	N/A	N/A	N/A	N/A	N/A	N/A	2	7%	N/A	N/A
Other ²	N/A	N/A	N/A	N/A	N/A	N/A	7	26%	N/A	N/A

Notes:

1. Percentage in the "Total" columns is calculated based on total number of exit/transfer, excluding children remained in CC facility/program.

2. Other may include: ACS' Children Center, Non-secure/Secure Detention Center, Psychiatric Center, Residential Treatment Facility, and Runaway Shelter.

Prepared by OCFS Bureau of Research, Evaluation, and Performance Analytics; Data extracted from CONNECTIONS on 3/3/2021

Supplemental Table 4. Returns to Congregate Care in 2019 by Status at 1 Year Post CC Entry--Syracuse Region

	Remained in CC Program		Discharged from Custody		Stepped Down to Lower Level of Care		Transferred to Another CC Facility/Program		Total	
	#	%	#	%	#	%	#	%	#	%
Total¹	2	15%	3	23%	4	31%	4	31%	13	100%
Demographics										
Gender										
Female	0	0%	2	67%	1	25%	3	75%	6	46%
Male	2	100%	1	33%	3	75%	1	25%	7	54%
Race/Ethnicity										
White/Caucasian	2	100%	2	67%	3	75%	2	50%	9	69%
Black/African American	0	0%	0	0%	0	0%	1	25%	1	8%
Hispanic/Latino	0	0%	1	33%	0	0%	0	0%	1	8%
Other	0	0%	0	0%	0	0%	0	0%	0	0%
Unknown	0	0%	0	0%	1	25%	1	25%	2	15%
Age at Return to CC										
< 2	0	0%	0	0%	0	0%	0	0%	0	0%
2 - 5	0	0%	0	0%	0	0%	0	0%	0	0%
6 - 9	0	0%	0	0%	1	25%	0	0%	1	8%
10 - 12	1	50%	0	0%	0	0%	1	25%	2	15%
13	0	0%	0	0%	1	25%	0	0%	1	8%
14	0	0%	0	0%	0	0%	2	50%	2	15%
15	0	0%	0	0%	1	25%	0	0%	1	8%
16	0	0%	1	33%	1	25%	1	25%	3	23%
17+	1	50%	2	67%	0	0%	0	0%	3	23%
Current Movement into CC										
Facility upon Entry into CC										
Institution	1	50%	2	67%	1	25%	3	75%	7	54%
Group Residence	0	0%	0	0%	0	0%	0	0%	0	0%
Group Home	1	50%	0	0%	3	75%	1	25%	5	38%
AOBH	0	0%	1	33%	0	0%	0	0%	1	8%
Case Type										
CW	1	50%	1	33%	4	100%	2	50%	8	62%
JD	1	50%	1	33%	0	0%	1	25%	3	23%
PINS	0	0%	1	33%	0	0%	1	25%	2	15%
Previous History										
Status prior to CC Entry										
Absence	0	0%	1	33%	2	50%	1	25%	4	31%
Trial Discharge	2	100%	2	67%	2	50%	3	75%	9	69%
Any Prior FC Placement (Lifetime)										
No	2	100%	1	33%	2	50%	4	100%	9	69%
Yes	0	0%	2	67%	2	50%	0	0%	4	31%
Any Prior CC experience (Lifetime)										
No	0	0%	0	0%	0	0%	0	0%	0	0%
Yes	2	100%	3	100%	4	100%	4	100%	13	100%
Length of Time in Foster Care										
< 1 Month	0	0%	0	0%	0	0%	0	0%	0	0%
1-3 Months	0	0%	0	0%	2	50%	0	0%	2	15%
4-6 Months	0	0%	1	33%	0	0%	1	25%	2	15%
7-9 Months	1	50%	1	33%	1	25%	0	0%	3	23%
10-12 Months	1	50%	0	0%	0	0%	0	0%	1	8%
13-15 Months	0	0%	1	33%	0	0%	0	0%	1	8%
16-18 Months	0	0%	0	0%	0	0%	0	0%	0	0%
19-21 Months	0	0%	0	0%	0	0%	1	25%	1	8%
22-24 Months	0	0%	0	0%	0	0%	0	0%	0	0%
25+ Months	0	0%	0	0%	1	25%	2	50%	3	23%
Length of Time in CC Facility prior to Absence / TD										
< 1 Month	0	0%	0	0%	2	50%	0	0%	2	15%
1-3 Months	1	50%	1	33%	2	50%	2	50%	6	46%
4-6 Months	0	0%	1	33%	0	0%	0	0%	1	8%
7-9 Months	1	50%	0	0%	0	0%	0	0%	1	8%
10-12 Months	0	0%	0	0%	0	0%	1	25%	1	8%
13-15 Months	0	0%	1	33%	0	0%	0	0%	1	8%
16-18 Months	0	0%	0	0%	0	0%	0	0%	0	0%
19-21 Months	0	0%	0	0%	0	0%	0	0%	0	0%
22-24 Months	0	0%	0	0%	0	0%	0	0%	0	0%
25+ Months	0	0%	0	0%	0	0%	1	25%	1	8%
Outcome										
Time To Exit / Transfer in 12-Month Followup²										
Exited within 30 Days	N/A	N/A	0	0%	1	25%	1	25%	2	18%
Exited between 30 and 60 Days	N/A	N/A	0	0%	1	25%	1	25%	2	18%
Exited between 61 and 365 Days	N/A	N/A	3	100%	2	50%	2	50%	7	64%
Exit Type										
Discharged from Custody										
Discharged to Permanency (Return to Parent, Relative, Adoption)	N/A	N/A	0	0%	N/A	N/A	N/A	N/A	N/A	N/A
Discharged to Adult Corrections/OCFS/Other JD Placement	N/A	N/A	1	33%	N/A	N/A	N/A	N/A	N/A	N/A
Other (e.g., Adulthood obtained, AWOL, Entered OMH Facility, etc.)	N/A	N/A	2	67%	N/A	N/A	N/A	N/A	N/A	N/A
Stepped down into lower level of care										
Certified Foster Home	N/A	N/A	N/A	N/A	0	0%	N/A	N/A	N/A	N/A
Approved Relative Foster Home	N/A	N/A	N/A	N/A	0	0%	N/A	N/A	N/A	N/A
Foster/Adoptive Home	N/A	N/A	N/A	N/A	3	75%	N/A	N/A	N/A	N/A
Missing Facility Information	N/A	N/A	N/A	N/A	0	0%	N/A	N/A	N/A	N/A
Trial Discharge	N/A	N/A	N/A	N/A	1	25%	N/A	N/A	N/A	N/A
Transferred to another CC facility / program										
Institution	N/A	N/A	N/A	N/A	N/A	N/A	3	75%	N/A	N/A
Group Residence	N/A	N/A	N/A	N/A	N/A	N/A	0	0%	N/A	N/A
Group Home	N/A	N/A	N/A	N/A	N/A	N/A	0	0%	N/A	N/A
AOBH	N/A	N/A	N/A	N/A	N/A	N/A	0	0%	N/A	N/A
Other ³	N/A	N/A	N/A	N/A	N/A	N/A	1	25%	N/A	N/A

Notes:
 1. This total number of returns includes children being absent or in trial discharge more than 14 days and returned to the same CC facility/program.
 2. Percentage in the "Total" columns is calculated based on total number of exit/transfer, excluding children remained in CC facility/program.
 3. Other may include: ACS' Children Center, Non-secure/Secure Detention Center, Psychiatric Center, Residential Treatment Facility, and Runaway Shelter.
 Prepared by OCFS Bureau of Research, Evaluation, and Performance Analytics; Data extracted from CONNECTIONS on 3/3/2021

Supplemental Table 5. Children Entered Congregate Care in 2019 and Stayed for 6 or 12 Consecutive Months--Syracuse Region

	Children Entered CC <= 12 and Stayed for 6 Consecutive Months		Children Entered CC >= 13 and Stayed for 12 Consecutive Months		Total	
	#	%	#	%	#	%
Total	48	25%	147	75%	195	100%
Demographics						
Gender						
Female	18	38%	57	39%	75	38%
Male	30	63%	90	61%	120	62%
Race/Ethnicity						
White/Caucasian	24	50%	92	63%	116	59%
Black/African American	9	19%	24	16%	33	17%
Hispanic/Latino	5	10%	7	5%	12	6%
Other	0	0%	0	0%	0	0%
Unknown	10	21%	24	16%	34	17%
Age at Entry into CC						
< 2	0	0%	0	0%	0	0%
2 - 5	0	0%	0	0%	0	0%
6 - 9	12	25%	0	0%	12	6%
10 - 12	36	75%	0	0%	36	18%
13	0	0%	25	17%	25	13%
14	0	0%	30	20%	30	15%
15	0	0%	43	29%	43	22%
16	0	0%	34	23%	34	17%
17+	0	0%	15	10%	15	8%
Current Movement into CC						
Facility upon Entry into CC						
Institution	38	79%	102	69%	140	72%
Group Residence	4	8%	0	0%	4	2%
Group Home	6	13%	31	21%	37	19%
AOBH	0	0%	14	10%	14	7%
Path of CC Entry						
New Admission	9	19%	54	37%	63	32%
Step Ups	23	48%	34	23%	57	29%
Lateral Transfers	14	29%	58	39%	72	37%
Return from Absence / TD ¹	2	4%	1	1%	3	2%
Case Type						
CW	43	90%	92	63%	135	69%
JD	3	6%	36	24%	39	20%
PINS	2	4%	19	13%	21	11%
Previous History						
Any Prior FC Placement (Lifetime)						
No	40	83%	91	62%	131	67%
Yes	8	17%	56	38%	64	33%
Any Prior CC experience (Lifetime)						
No	24	50%	54	37%	78	40%
Yes	24	50%	93	63%	117	60%

Notes:

1. This number includes children being absent or in trial discharge more than 14 days and returned to the same CC facility/program.

Prepared by OCFS Bureau of Research, Evaluation, and Performance Analytics; Data extracted from CONNECTIONS on 3/3/2021

Trend Table 1. New Admissions, Step-Ups, Lateral Transfers, and Returns from Absence/Trial Discharge to Congregate Care by Case Type from 2017 to 2020, Syracuse Region

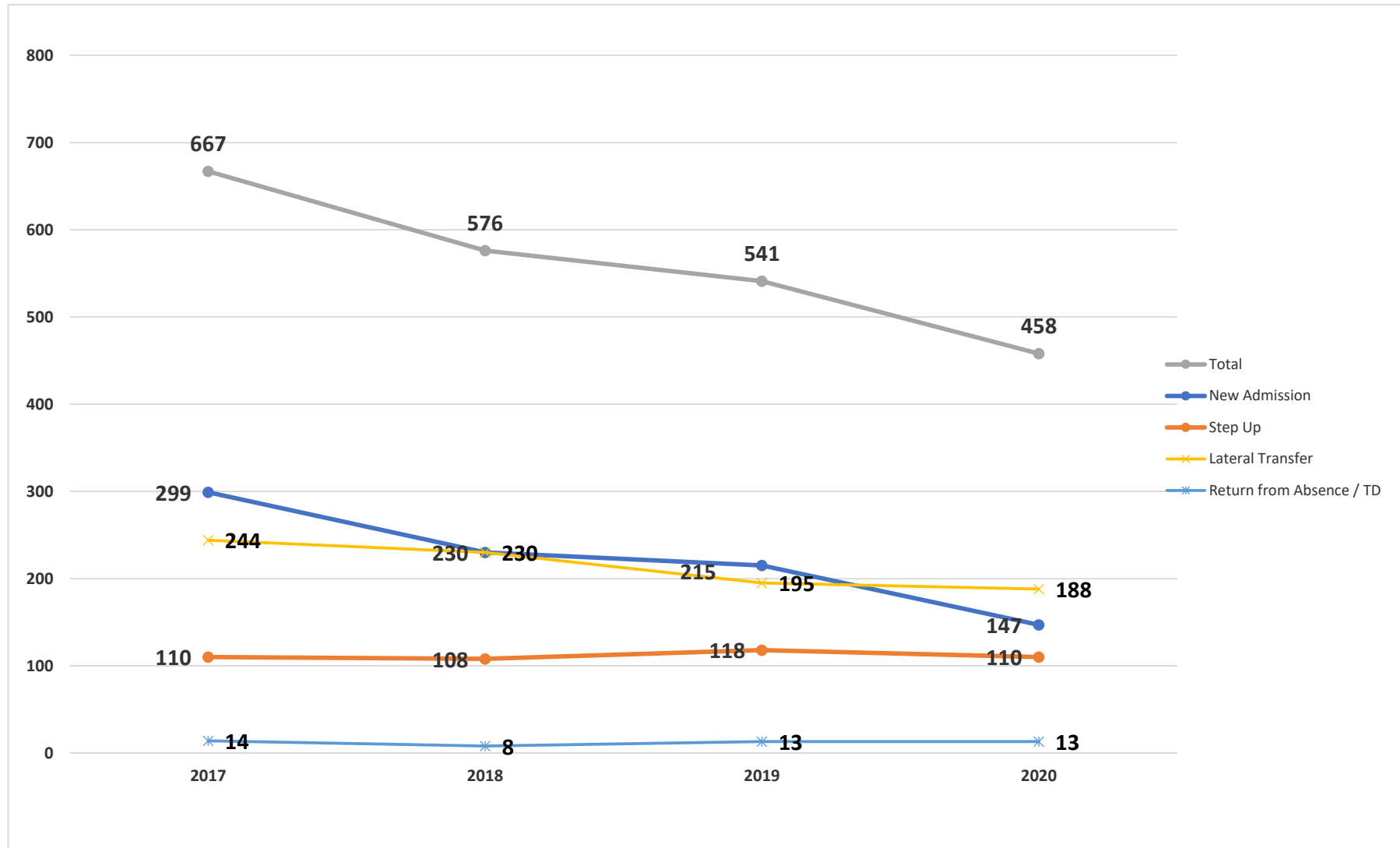
Years	Facility Type ¹	New Admissions				Step-Ups ²				Lateral Transfer ³				Return from Absence / TD ⁴				Total			
		CW	JD	PINS	Total	CW	JD	PINS	Total	CW	JD	PINS	Total	CW	JD	PINS	Total	CW	JD	PINS	Total
2017	Total	142	93	64	299	98	5	7	110	135	66	43	244	8	5	1	14	383	169	115	667
	Institution	105	90	60	255	64	4	5	73	96	54	37	187	2	5	0	7	267	153	102	522
	Group Residence	0	2	0	2	7	0	0	7	3	1	0	4	0	0	0	0	10	3	0	13
	Group Home	36	1	4	41	23	0	2	25	20	4	3	27	5	0	1	6	84	5	10	99
	Agency Boarding Home	1	0	0	1	4	1	0	5	16	7	3	26	1	0	0	1	22	8	3	33
2018	Total	114	62	54	230	98	3	7	108	142	52	36	230	5	2	1	8	359	119	98	576
	Institution	75	58	49	182	70	3	6	79	89	44	29	162	3	2	1	6	237	107	85	429
	Group Residence	4	0	2	6	2	0	0	2	0	0	0	0	0	0	0	0	6	0	2	8
	Group Home	34	4	2	40	20	0	1	21	40	4	3	47	1	0	0	1	95	8	6	109
	Agency Boarding Home	1	0	1	2	6	0	0	6	13	4	4	21	1	0	0	1	21	4	5	30
2019	Total	93	92	30	215	108	2	8	118	121	44	30	195	8	3	2	13	330	141	70	541
	Institution	51	88	26	165	70	1	6	77	80	36	25	141	3	2	2	7	204	127	59	390
	Group Residence	2	0	2	4	3	0	0	3	1	0	0	1	0	0	0	0	6	0	2	8
	Group Home	40	3	1	44	34	1	1	36	27	3	4	34	4	1	0	5	105	8	6	119
	Agency Boarding Home	0	1	1	2	1	0	1	2	13	5	1	19	1	0	0	1	15	6	3	24
2020	Total	79	64	4	147	106	1	3	110	143	40	5	188	6	7	0	13	334	112	12	458
	Institution	47	59	3	109	55	1	3	59	88	31	5	124	5	5	0	10	195	96	11	302
	Group Residence	0	1	1	2	8	0	0	8	1	0	0	1	0	0	0	0	9	1	1	11
	Group Home	30	4	0	34	41	0	0	41	46	5	0	51	1	2	0	3	118	11	0	129
	Agency Boarding Home	2	0	0	2	2	0	0	2	8	4	0	12	0	0	0	0	12	4	0	16

Note:

1. Numbers in this table exclude any movements into the ACS' Children's Center.
2. Step-Ups include youth moved from foster homes and adoption subsidy homes into congregate care facility.
3. Movements from ACS' Children Center to other CC facility / program are counted as lateral transfers; this category also includes youth moved from other facility (e.g., Runaway Shelter, Residential Treatment Facility, Detention, Voluntary Community Residence, Adoption Subsidy Home, etc.) into congregate care facility.
4. Only being absent or in trial discharge more than 14 days and returning to the same CC facility / program are included.

Prepared by OCFS Bureau of Research, Evaluation, and Performance Analytics; Data extracted from CONNECTIONS on 3/3/2021

Figure 1. Movements into Congregate Care between 2017 and 2020, Syracuse Region



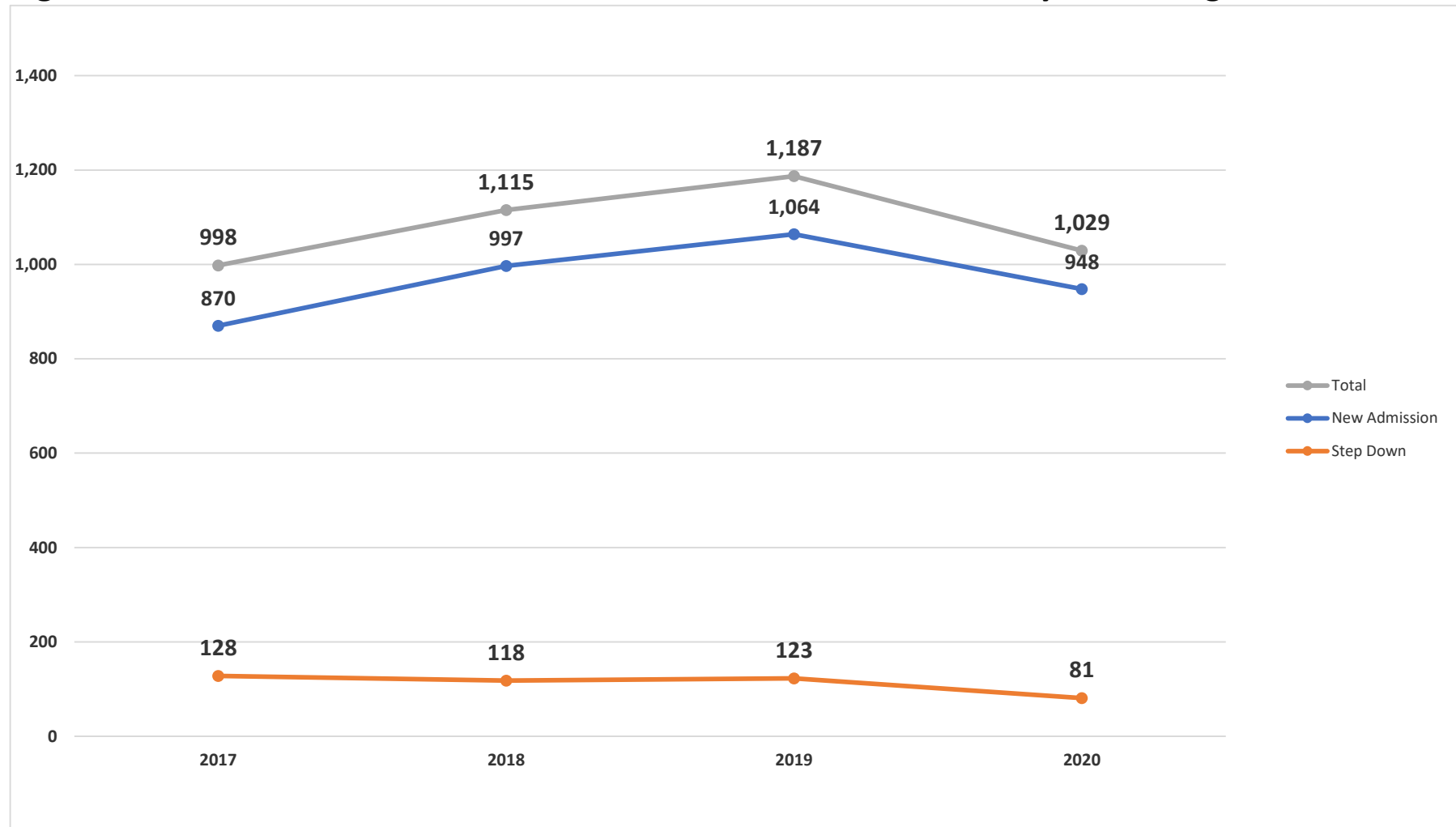
Prepared by OCFS Bureau of Research, Evaluation, and Performance Analytics; Data extracted from CONNECTIONS on 3/3/2021

Trend Table 2. New Admissions and Step-Downs into Foster Home by Case Type from 2017 to 2020, Syracuse Region

Years	Facility Type	New Admissions				Step-Downs				Total			
		CW	JD	PINS	Total	CW	JD	PINS	Total	CW	JD	PINS	Total
2017	Total	856	3	11	870	115	6	7	128	971	9	18	998
	Foster Boarding Home	728	3	11	742	106	4	6	116	834	7	17	858
	Approved Relative Home	128	0	0	128	9	2	1	12	137	2	1	140
2018	Total	977	8	12	997	100	11	7	118	1,077	19	19	1,115
	Foster Boarding Home	779	8	12	799	83	10	6	99	862	18	18	898
	Approved Relative Home	198	0	0	198	17	1	1	19	215	1	1	217
2019	Total	1,052	5	7	1,064	108	3	12	123	1,160	8	19	1,187
	Foster Boarding Home	748	5	7	760	89	3	11	103	837	8	18	863
	Approved Relative Home	304	0	0	304	19	0	1	20	323	0	1	324
2020	Total	947	0	1	948	74	3	4	81	1,021	3	5	1,029
	Foster Boarding Home	591	0	1	592	57	1	3	61	648	1	4	653
	Approved Relative Home	356	0	0	356	17	2	1	20	373	2	1	376

Prepared by OCFS Bureau of Research, Evaluation, and Performance Analytics; Data extracted from CONNECTIONS on 3/3/2021

Figure 2. Movements into Foster Homes between 2017 and 2020, Syracuse Region



Prepared by OCFS Bureau of Research, Evaluation, and Performance Analytics; Data extracted from CONNECTIONS on 3/3/2021