

Family First Prevention Services Act (FFPSA) Bubble Chart Data Packet Supplemental Tables

Table 1. Number of unique children with movements into CC program in 2019 and their movement types.

	# Movements	# Unique Children	Movement Types*									
			New Admission(s) Only		Step Up(s) Only		Lateral Transfer(s) Only		Return(s) from Absence / TD Only		Two or More Movement Types	
			N	%	N	%	N	%	N	%	N	%
Total	4,674	3,410	1,331	39%	445	13%	832	24%	249	7%	553	16%
New York City	1,978	1,405	533	38%	94	7%	403	29%	195	14%	180	13%
Rest of State	2,696	2,005	798	40%	351	18%	429	21%	54	3%	373	19%
ALBANY	113	89	39	44%	16	18%	18	20%	0	0%	16	18%
ALLEGANY	13	9	3	33%	1	11%	2	22%	0	0%	3	33%
BROOME	116	80	30	38%	10	13%	17	21%	1	1%	22	28%
CATTARAUGUS	15	13	7	54%	4	31%	1	8%	0	0%	1	8%
CAYUGA	23	18	9	50%	3	17%	3	17%	0	0%	3	17%
CHAUTAUQUA	38	30	12	40%	7	23%	7	23%	1	3%	3	10%
CHEMUNG	31	24	10	42%	3	13%	7	29%	0	0%	4	17%
CHENANGO	9	5	1	20%	0	0%	1	20%	0	0%	3	60%
CLINTON	7	7	2	29%	3	43%	2	29%	0	0%	0	0%
COLUMBIA	32	26	14	54%	2	8%	7	27%	1	4%	2	8%
CORTLAND	9	8	0	0%	5	63%	2	25%	0	0%	1	13%
DELAWARE	4	3	0	0%	2	67%	0	0%	0	0%	1	33%
DUTCHESS	80	63	31	49%	5	8%	15	24%	3	5%	9	14%
ERIE	345	260	125	48%	31	12%	43	17%	11	4%	50	19%
ESSEX	27	20	2	10%	10	50%	5	25%	0	0%	3	15%
FRANKLIN	5	5	0	0%	5	100%	0	0%	0	0%	0	0%
FULTON	15	11	4	36%	2	18%	2	18%	1	9%	2	18%
GENESEE	16	13	2	15%	6	46%	4	31%	0	0%	1	8%
GREENE	19	13	6	46%	0	0%	3	23%	1	8%	3	23%
HAMILTON	2	1	0	0%	0	0%	0	0%	0	0%	1	100%
HERKIMER	43	32	11	34%	8	25%	4	13%	2	6%	7	22%
JEFFERSON	11	7	1	14%	2	29%	2	29%	0	0%	2	29%
LEWIS	0	0	0	0%	0	0%	0	0%	0	0%	0	0%
LIVINGSTON	11	10	5	50%	0	0%	4	40%	0	0%	1	10%
MADISON	24	19	4	21%	4	21%	9	47%	0	0%	2	11%
MONROE	113	90	30	33%	25	28%	16	18%	2	2%	17	19%
MONTGOMERY	20	15	5	33%	4	27%	1	7%	1	7%	4	27%
NASSAU	163	104	50	48%	10	10%	13	13%	0	0%	31	30%
NIAGARA	41	36	13	36%	12	33%	6	17%	1	3%	4	11%
ONEIDA	86	65	35	54%	7	11%	11	17%	0	0%	12	18%
ONONDAGA	119	96	43	45%	12	13%	23	24%	2	2%	16	17%
ONTARIO	18	15	4	27%	5	33%	3	20%	0	0%	3	20%
ORANGE	137	91	18	20%	20	22%	30	33%	5	5%	18	20%
ORLEANS	7	6	1	17%	3	50%	1	17%	0	0%	1	17%
OSWEGO	35	29	14	48%	7	24%	4	14%	0	0%	4	14%
OTSEGO	8	8	4	50%	1	13%	3	38%	0	0%	0	0%
PUTNAM	9	7	2	29%	2	29%	0	0%	1	14%	2	29%
RENSSELAER	53	41	17	41%	3	7%	9	22%	2	5%	10	24%
ROCKLAND	4	4	3	75%	0	0%	1	25%	0	0%	0	0%
ST. LAWRENCE	45	35	10	29%	9	26%	6	17%	1	3%	9	26%
SARATOGA	35	26	15	58%	5	19%	1	4%	1	4%	4	15%
SCHENECTADY	80	57	14	25%	10	18%	23	40%	3	5%	7	12%
SCHOHARIE	19	15	4	27%	4	27%	4	27%	0	0%	3	20%
SCHUYLER	5	5	2	40%	0	0%	3	60%	0	0%	0	0%
SENECA	9	7	1	14%	2	29%	2	29%	0	0%	2	29%
STEUBEN	31	23	5	22%	2	9%	10	43%	0	0%	6	26%
SUFFOLK	330	219	96	44%	40	18%	33	15%	6	3%	44	20%
SULLIVAN	43	30	3	10%	7	23%	12	40%	2	7%	6	20%
TIOGA	12	11	0	0%	4	36%	6	55%	0	0%	1	9%
TOMPKINS	9	7	1	14%	2	29%	2	29%	0	0%	2	29%
ULSTER	46	37	14	38%	4	11%	13	35%	0	0%	6	16%
WARREN	12	10	6	60%	3	30%	1	10%	0	0%	0	0%
WASHINGTON	13	11	5	45%	3	27%	2	18%	0	0%	1	9%
WAYNE	4	4	1	25%	3	75%	0	0%	0	0%	0	0%
WESTCHESTER	170	125	59	47%	10	8%	32	26%	6	5%	18	14%
WYOMING	5	5	4	80%	1	20%	0	0%	0	0%	0	0%
YATES	5	3	1	33%	0	0%	0	0%	0	0%	2	67%
ST. REGIS	2	2	0	0%	2	100%	0	0%	0	0%	0	0%

*Percentage is calculated based on # unique children.

Prepared by OCFS Bureau of Research, Evaluation, and Performance Analytics; Data extracted from CONNECTIONS on 3/3/2021

Supplemental Table 1. New Admissions into Congregate Care in 2019 by Status at 1 Year Post CC Entry--NYS

	Remained in CC Program		Discharged from Custody		Stepped Down to Lower Level of Care		Transferred to Another CC Facility/Program		Total	
	#	%	#	%	#	%	#	%	#	%
Total	416	25%	534	32%	584	35%	127	8%	1,661	100%
Demographics										
Gender										
Female	150	36%	229	43%	253	43%	55	43%	687	41%
Male	266	64%	305	57%	331	57%	72	57%	974	59%
Race/Ethnicity										
White/Caucasian	112	27%	157	29%	117	20%	35	28%	421	25%
Black/African American	148	36%	214	40%	263	45%	49	39%	674	41%
Hispanic/Latino	110	26%	115	22%	156	27%	32	25%	413	25%
Other	6	1%	5	1%	4	1%	2	2%	17	1%
Unknown	40	10%	43	8%	44	8%	9	7%	136	8%
Age at Entry into CC										
< 2	0	0%	36	7%	157	27%	4	3%	197	12%
2 - 5	2	0%	46	9%	104	18%	6	5%	158	10%
6 - 9	16	4%	43	8%	57	10%	7	6%	123	7%
10 - 12	31	7%	47	9%	42	7%	9	7%	129	8%
13	36	9%	38	7%	24	4%	7	6%	105	6%
14	75	18%	64	12%	34	6%	23	18%	196	12%
15	89	21%	102	19%	53	9%	23	18%	267	16%
16	112	27%	103	19%	75	13%	29	23%	319	19%
17+	55	13%	55	10%	38	7%	19	15%	167	10%
Current Movement into CC										
Facility upon Entry into CC										
Institution	253	61%	273	51%	156	27%	74	58%	756	46%
Group Residence	37	9%	113	21%	328	56%	19	15%	497	30%
Group Home	104	25%	124	23%	92	16%	25	20%	345	21%
AOBH	22	5%	24	4%	8	1%	9	7%	63	4%
Case Type										
CW	219	53%	284	53%	438	75%	74	58%	1,015	61%
JD	135	32%	167	31%	112	19%	45	35%	459	28%
PINS	62	15%	83	16%	34	6%	8	6%	187	11%
Previous History										
Any Prior FC Placement (Lifetime)										
No	284	68%	405	76%	440	75%	87	69%	1,216	73%
Yes	132	32%	129	24%	144	25%	40	31%	445	27%
Any Prior CC experience (Lifetime)										
No	334	80%	450	84%	521	89%	96	76%	1,401	84%
Yes	82	20%	84	16%	63	11%	31	24%	260	16%
Outcome										
Time To Exit / Transfer in 12-Month Followup¹										
Exited within 30 Days	N/A	N/A	195	37%	335	57%	16	13%	546	44%
Exited between 30 and 60 Days	N/A	N/A	45	8%	33	6%	4	3%	82	7%
Exited between 61 and 365 Days	N/A	N/A	294	55%	216	37%	107	84%	617	50%
Exit Type										
Discharged from Custody										
Discharged to Permanency (Return to Parent, Relative, Adoption)	N/A	N/A	449	84%	N/A	N/A	N/A	N/A	N/A	N/A
Discharged to Adult Corrections/OCFS/Other JD Placement	N/A	N/A	61	11%	N/A	N/A	N/A	N/A	N/A	N/A
Other (e.g., Adulthood obtained, AWOL, Entered OMH Facility, etc.)	N/A	N/A	24	4%	N/A	N/A	N/A	N/A	N/A	N/A
Stepped down into lower level of care										
Certified Foster Home	N/A	N/A	N/A	N/A	151	26%	N/A	N/A	N/A	N/A
Approved Relative Foster Home	N/A	N/A	N/A	N/A	63	11%	N/A	N/A	N/A	N/A
Foster/Adoptive Home	N/A	N/A	N/A	N/A	207	35%	N/A	N/A	N/A	N/A
Missing Facility Information	N/A	N/A	N/A	N/A	1	0%	N/A	N/A	N/A	N/A
Trial Discharge	N/A	N/A	N/A	N/A	162	28%	N/A	N/A	N/A	N/A
Transferred to another CC facility / program										
Institution	N/A	N/A	N/A	N/A	N/A	N/A	46	36%	N/A	N/A
Group Residence	N/A	N/A	N/A	N/A	N/A	N/A	3	2%	N/A	N/A
Group Home	N/A	N/A	N/A	N/A	N/A	N/A	32	25%	N/A	N/A
AOBH	N/A	N/A	N/A	N/A	N/A	N/A	17	13%	N/A	N/A
Others ²	N/A	N/A	N/A	N/A	N/A	N/A	29	23%	N/A	N/A

Notes:

1. Percentage in the "Total" columns is calculated based on total number of exit/transfer, excluding children remained in CC facility/program.

2. Other may include: ACS' Children Center, Non-secure/Secure Detention Center, Psychiatric Center, Residential Treatment Facility, and Runaway Shelter.

Prepared by OCFS Bureau of Research, Evaluation, and Performance Analytics; Data extracted from CONNECTIONS on 3/3/2021

Supplemental Table 2. Step-Ups into Congregate Care in 2019 by Status at 1 Year Post CC Entry--NYS

	Remained in CC Program		Discharged from Custody		Stepped Down to Lower Level of Care		Transferred to Another CC Facility/Program		Total	
	#	%	#	%	#	%	#	%	#	%
Total	272	39%	59	8%	311	44%	57	8%	699	100%
Demographics										
Gender										
Female	132	49%	28	47%	146	47%	27	47%	333	48%
Male	140	51%	31	53%	165	53%	30	53%	366	52%
Race/Ethnicity										
White/Caucasian	99	36%	21	36%	83	27%	26	46%	229	33%
Black/African American	86	32%	23	39%	122	39%	16	28%	247	35%
Hispanic/Latino	53	19%	8	14%	73	23%	9	16%	143	20%
Other	4	1%	0	0%	6	2%	0	0%	10	1%
Unknown	30	11%	7	12%	27	9%	6	11%	70	10%
Age at Entry into CC										
< 2	1	0%	0	0%	10	3%	0	0%	11	2%
2 - 5	3	1%	1	2%	27	9%	1	2%	32	5%
6 - 9	31	11%	6	10%	50	16%	7	12%	94	13%
10 - 12	46	17%	9	15%	48	15%	17	30%	120	17%
13	30	11%	7	12%	28	9%	4	7%	69	10%
14	38	14%	5	8%	27	9%	5	9%	75	11%
15	38	14%	6	10%	33	11%	3	5%	80	11%
16	45	17%	8	14%	35	11%	7	12%	95	14%
17+	40	15%	17	29%	53	17%	13	23%	123	18%
Current Movement into CC										
Facility upon Entry into CC										
Institution	171	63%	33	56%	162	52%	32	56%	398	57%
Group Residence	20	7%	6	10%	27	9%	10	18%	63	9%
Group Home	60	22%	18	31%	96	31%	15	26%	189	27%
AOBH	21	8%	2	3%	26	8%	0	0%	49	7%
Case Type										
CW	254	93%	48	81%	297	95%	52	91%	651	93%
JD	10	4%	4	7%	3	1%	4	7%	21	3%
PINS	8	3%	7	12%	11	4%	1	2%	27	4%
Previous History										
Any Prior FC Placement (Lifetime)										
No	188	69%	43	73%	192	62%	40	70%	463	66%
Yes	84	31%	16	27%	119	38%	17	30%	236	34%
Any Prior CC experience (Lifetime)										
No	150	55%	38	64%	140	45%	28	49%	356	51%
Yes	122	45%	21	36%	171	55%	29	51%	343	49%
Facility Prior to Movement into Current CC										
Certified Foster Home	93	34%	18	31%	73	23%	14	25%	198	28%
Approved Relative Foster Home	28	10%	4	7%	23	7%	6	11%	61	9%
Foster/Adoptive Home	150	55%	36	61%	215	69%	37	65%	438	63%
Adoption Subsidy Home	1	0%	1	2%	0	0%	0	0%	2	0%
Unknown	0	0%	0	0%	0	0%	0	0%	0	0%
Length of Time in Foster Care										
< 1 Month	30	11%	13	22%	37	12%	10	18%	90	13%
1-3 Months	29	11%	14	24%	41	13%	12	21%	96	14%
4-6 Months	22	8%	7	12%	23	7%	3	5%	55	8%
7-9 Months	19	7%	4	7%	27	9%	2	4%	52	7%
10-12 Months	15	6%	3	5%	19	6%	4	7%	41	6%
13-15 Months	8	3%	1	2%	10	3%	1	2%	20	3%
16-18 Months	13	5%	2	3%	6	2%	2	4%	23	3%
19-21 Months	14	5%	1	2%	7	2%	1	2%	23	3%
22-24 Months	9	3%	0	0%	9	3%	1	2%	19	3%
25+ Months	113	42%	14	24%	132	42%	21	37%	280	40%
Length of Time in Previous Facility										
< 1 Month	102	38%	35	59%	145	47%	27	47%	309	44%
1-3 Months	83	31%	14	24%	70	23%	18	32%	185	26%
4-6 Months	26	10%	5	8%	36	12%	4	7%	71	10%
7-9 Months	24	9%	3	5%	16	5%	1	2%	44	6%
10-12 Months	8	3%	1	2%	20	6%	3	5%	32	5%
13-15 Months	7	3%	0	0%	6	2%	0	0%	13	2%
16-18 Months	9	3%	1	2%	1	0%	0	0%	11	2%
19-21 Months	5	2%	0	0%	2	1%	2	4%	9	1%
22-24 Months	0	0%	0	0%	2	1%	0	0%	2	0%
25+ Months	8	3%	0	0%	13	4%	2	4%	23	3%
Outcome										
Time To Exit / Transfer in 12-Month Followup¹										
Exited within 30 Days	N/A	N/A	2	3%	135	43%	6	11%	143	33%
Exited between 30 and 60 Days	N/A	N/A	7	12%	33	11%	5	9%	45	11%
Exited between 61 and 365 Days	N/A	N/A	50	85%	143	46%	46	81%	239	56%
Exit Type										
Discharged from Custody										
Discharged to Permanency (Return to Parent, Relative, Adoption)	N/A	N/A	42	71%	N/A	N/A	N/A	N/A	N/A	N/A
Discharged to Adult Corrections/OCFS/Other JD Placement	N/A	N/A	4	7%	N/A	N/A	N/A	N/A	N/A	N/A
Other (e.g., Adulthood obtained, AWOL, Entered OMH Facility, etc.)	N/A	N/A	13	22%	N/A	N/A	N/A	N/A	N/A	N/A
Stepped down into lower level of care										
Certified Foster Home	N/A	N/A	N/A	N/A	49	16%	N/A	N/A	N/A	N/A
Approved Relative Foster Home	N/A	N/A	N/A	N/A	31	10%	N/A	N/A	N/A	N/A
Foster/Adoptive Home	N/A	N/A	N/A	N/A	181	58%	N/A	N/A	N/A	N/A
Missing Facility Information	N/A	N/A	N/A	N/A	0	0%	N/A	N/A	N/A	N/A
Trial Discharge	N/A	N/A	N/A	N/A	50	16%	N/A	N/A	N/A	N/A
Transferred to another CC facility / program										
Institution	N/A	N/A	N/A	N/A	N/A	N/A	22	39%	N/A	N/A
Group Residence	N/A	N/A	N/A	N/A	N/A	N/A	4	7%	N/A	N/A
Group Home	N/A	N/A	N/A	N/A	N/A	N/A	12	21%	N/A	N/A
AOBH	N/A	N/A	N/A	N/A	N/A	N/A	3	5%	N/A	N/A
Others ²	N/A	N/A	N/A	N/A	N/A	N/A	16	28%	N/A	N/A

Notes:
 1. Percentage in the "Total" columns is calculated based on total number of exit/transfer, excluding children remained in CC facility/program.
 2. Other may include: ACS' Children Center, Non-secure/Secure Detention Center, Psychiatric Center, Residential Treatment Facility, and Runaway Shelter.
 Prepared by OCFs Bureau of Research, Evaluation, and Performance Analytics; Data extracted from CONNECTIONS on 3/3/2021

Supplemental Table 3. Lateral Movements into Congregate Care in 2019 by Status at 1 Year Post CC Entry--NYS

	Remained in CC Program		Discharged from Custody		Stepped Down to Lower Level of Care		Transferred to Another CC Facility/Program		Total	
	#	%	#	%	#	%	#	%	#	%
Total	848	49%	331	19%	307	18%	246	14%	1,732	100%
Demographics										
Gender										
Female	406	48%	146	44%	143	47%	130	53%	825	48%
Male	442	52%	185	56%	164	53%	116	47%	907	52%
Race/Ethnicity										
White/Caucasian	195	23%	102	31%	77	25%	48	20%	422	24%
Black/African American	392	46%	117	35%	120	39%	120	49%	749	43%
Hispanic/Latino	193	23%	71	21%	78	25%	51	21%	393	23%
Other	9	1%	6	2%	5	2%	2	1%	22	1%
Unknown	59	7%	35	11%	27	9%	25	10%	146	8%
Age at Lateral Transfer										
< 2	0	0%	5	2%	15	5%	0	0%	20	1%
2 - 5	1	0%	8	2%	10	3%	0	0%	19	1%
6 - 9	15	2%	11	3%	15	5%	5	2%	46	3%
10 - 12	74	9%	25	8%	21	7%	15	6%	135	8%
13	46	5%	20	6%	25	8%	10	4%	101	6%
14	77	9%	40	12%	28	9%	17	7%	162	9%
15	150	18%	46	14%	51	17%	47	19%	294	17%
16	190	22%	61	18%	63	21%	53	22%	367	21%
17+	295	35%	115	35%	79	26%	99	40%	588	34%
Current Movement into CC										
Facility upon Entry into CC										
Institution	384	45%	159	48%	120	39%	81	33%	744	43%
Group Residence	73	9%	44	13%	64	21%	24	10%	205	12%
Group Home	240	28%	91	27%	101	33%	98	40%	530	31%
AOBH	151	18%	37	11%	22	7%	43	17%	253	15%
Case Type										
CW	700	83%	204	62%	219	71%	204	83%	1,327	77%
JD	92	11%	75	23%	61	20%	28	11%	256	15%
PINS	56	7%	52	16%	27	9%	14	6%	149	9%
Previous History										
Any Prior FC Placement (Lifetime)										
No	522	62%	236	71%	224	73%	163	66%	1,145	66%
Yes	326	38%	95	29%	83	27%	83	34%	587	34%
Any Prior CC experience (Lifetime)										
No	103	12%	52	16%	63	21%	39	16%	257	15%
Yes	745	88%	279	84%	244	79%	207	84%	1,475	85%
Facility Prior to Movement into Current CC										
Institution	309	36%	150	45%	114	37%	79	32%	652	38%
Group Residence	56	7%	13	4%	19	6%	9	4%	97	6%
Group Home	208	25%	66	20%	72	23%	47	19%	393	23%
AOBH	98	12%	29	9%	17	6%	34	14%	178	10%
ACS' Children Center	128	15%	50	15%	65	21%	57	23%	300	17%
Others ¹	49	6%	23	7%	20	7%	20	8%	112	6%
Length of Time in Foster Care										
< 1 Month	82	10%	58	18%	62	20%	33	13%	235	14%
1-3 Months	134	16%	61	18%	37	12%	40	16%	272	16%
4-6 Months	78	9%	54	16%	35	11%	29	12%	196	11%
7-9 Months	68	8%	26	8%	26	8%	13	5%	133	8%
10-12 Months	52	6%	26	8%	13	4%	12	5%	103	6%
13-15 Months	49	6%	15	5%	26	8%	12	5%	102	6%
16-18 Months	28	3%	20	6%	14	5%	14	6%	76	4%
19-21 Months	37	4%	7	2%	12	4%	9	4%	65	4%
22-24 Months	31	4%	7	2%	5	2%	6	2%	49	3%
25+ Months	289	34%	57	17%	77	25%	78	32%	501	29%
Length of Time in Previous Facility										
< 1 Month	234	28%	90	27%	96	31%	85	35%	505	29%
1-3 Months	259	31%	109	33%	84	27%	76	31%	528	30%
4-6 Months	117	14%	60	18%	52	17%	38	15%	267	15%
7-9 Months	82	10%	25	8%	30	10%	10	4%	147	8%
10-12 Months	44	5%	18	5%	16	5%	15	6%	93	5%
13-15 Months	30	4%	9	3%	7	2%	4	2%	50	3%
16-18 Months	23	3%	8	2%	6	2%	5	2%	42	2%
19-21 Months	11	1%	3	1%	3	1%	4	2%	21	1%
22-24 Months	18	2%	4	1%	3	1%	1	0%	26	2%
25+ Months	30	4%	5	2%	10	3%	8	3%	53	3%
Outcome										
Time To Exit / Transfer in 12-Month Followup¹										
Exited within 30 Days	N/A	N/A	39	12%	65	21%	33	13%	137	15%
Exited between 30 and 60 Days	N/A	N/A	34	10%	28	9%	30	12%	92	10%
Exited between 61 and 365 Days	N/A	N/A	258	78%	214	70%	183	74%	655	74%
Exit Type										
Discharged from Custody										
Discharged to Permanency (Return to Parent, Relative, Adoption)	N/A	N/A	233	70%	N/A	N/A	N/A	N/A	N/A	N/A
Discharged to Adult Corrections/OCFS/Other JD Placement	N/A	N/A	31	9%	N/A	N/A	N/A	N/A	N/A	N/A
Other (e.g., Adulthood obtained, AWOL, Entered OMH Facility, etc.)	N/A	N/A	67	20%	N/A	N/A	N/A	N/A	N/A	N/A
Stepped down into lower level of care										
Certified Foster Home	N/A	N/A	N/A	N/A	65	21%	N/A	N/A	N/A	N/A
Approved Relative Foster Home	N/A	N/A	N/A	N/A	21	7%	N/A	N/A	N/A	N/A
Foster/Adoptive Home	N/A	N/A	N/A	N/A	58	19%	N/A	N/A	N/A	N/A
Missing Facility Information	N/A	N/A	N/A	N/A	1	0%	N/A	N/A	N/A	N/A
Trial Discharge	N/A	N/A	N/A	N/A	162	53%	N/A	N/A	N/A	N/A
Transferred to another CC facility / program										
Institution	N/A	N/A	N/A	N/A	N/A	N/A	48	20%	N/A	N/A
Group Residence	N/A	N/A	N/A	N/A	N/A	N/A	19	8%	N/A	N/A
Group Home	N/A	N/A	N/A	N/A	N/A	N/A	64	26%	N/A	N/A
AOBH	N/A	N/A	N/A	N/A	N/A	N/A	31	13%	N/A	N/A
Other ²	N/A	N/A	N/A	N/A	N/A	N/A	84	34%	N/A	N/A

Notes:

1. Percentage in the "Total" columns is calculated based on total number of exit/transfer, excluding children remained in CC facility/program.

2. Other may include: ACS' Children Center, Non-secure/Secure Detention Center, Psychiatric Center, Residential Treatment Facility, and Runaway Shelter.

Prepared by OCFS Bureau of Research, Evaluation, and Performance Analytics; Data extracted from CONNECTIONS on 3/3/2021

Supplemental Table 4. Returns to Congregate Care in 2019 by Status at 1 Year Post CC Entry--NYS

	Remained in CC Program		Discharged from Custody		Stepped Down to Lower Level of Care		Transferred to Another CC Facility/Program		Total	
	#	%	#	%	#	%	#	%	#	%
Total¹	317	54%	104	18%	89	15%	72	12%	582	100%
Demographics										
Gender										
Female	193	61%	45	43%	36	40%	46	64%	320	55%
Male	124	39%	59	57%	53	60%	26	36%	262	45%
Race/Ethnicity										
White/Caucasian	18	6%	14	13%	5	6%	13	18%	50	9%
Black/African American	179	56%	49	47%	58	65%	32	44%	318	55%
Hispanic/Latino	86	27%	34	33%	17	19%	12	17%	149	26%
Other	6	2%	1	1%	1	1%	2	3%	10	2%
Unknown	28	9%	6	6%	8	9%	13	18%	55	9%
Age at Return to CC										
< 2	0	0%	0	0%	0	0%	0	0%	0	0%
2 - 5	0	0%	0	0%	0	0%	0	0%	0	0%
6 - 9	1	0%	1	1%	2	2%	0	0%	4	1%
10 - 12	10	3%	3	3%	2	2%	3	4%	18	3%
13	12	4%	1	1%	4	4%	2	3%	19	3%
14	23	7%	5	5%	9	10%	9	13%	46	8%
15	44	14%	14	13%	17	19%	11	15%	86	15%
16	55	17%	16	15%	19	21%	18	25%	108	19%
17+	172	54%	64	62%	36	40%	29	40%	301	52%
Current Movement into CC										
Facility upon Entry into CC										
Institution	228	72%	73	70%	43	48%	48	67%	392	67%
Group Residence	29	9%	12	12%	14	16%	7	10%	62	11%
Group Home	51	16%	16	15%	28	31%	9	13%	104	18%
AOBH	9	3%	3	3%	4	4%	8	11%	24	4%
Case Type										
CW	288	91%	75	72%	69	78%	56	78%	488	84%
JD	8	3%	19	18%	15	17%	10	14%	52	9%
PINS	21	7%	10	10%	5	6%	6	8%	42	7%
Previous History										
Status prior to CC Entry										
Absence	295	93%	89	86%	54	61%	66	92%	504	87%
Trial Discharge	22	7%	15	14%	35	39%	6	8%	78	13%
Any Prior FC Placement (Lifetime)										
No	207	65%	70	67%	57	64%	47	65%	381	65%
Yes	110	35%	34	33%	32	36%	25	35%	201	35%
Any Prior CC experience (Lifetime)										
No	0	0%	0	0%	0	0%	0	0%	0	0%
Yes	317	100%	104	100%	89	100%	72	100%	582	100%
Length of Time in Foster Care										
< 1 Month	0	0%	0	0%	1	1%	0	0%	1	0%
1-3 Months	20	6%	9	9%	7	8%	10	14%	46	8%
4-6 Months	20	6%	6	6%	5	6%	9	13%	40	7%
7-9 Months	19	6%	8	8%	8	9%	5	7%	40	7%
10-12 Months	23	7%	11	11%	9	10%	2	3%	45	8%
13-15 Months	22	7%	6	6%	9	10%	5	7%	42	7%
16-18 Months	17	5%	11	11%	10	11%	5	7%	43	7%
19-21 Months	20	6%	2	2%	3	3%	4	6%	29	5%
22-24 Months	15	5%	5	5%	4	4%	2	3%	26	4%
25+ Months	161	51%	46	44%	33	37%	30	42%	270	46%
Length of Time in CC Facility prior to Absence / TD										
< 1 Month	36	11%	10	10%	14	16%	10	14%	70	12%
1-3 Months	68	21%	31	30%	20	22%	23	32%	142	24%
4-6 Months	40	13%	12	12%	19	21%	7	10%	78	13%
7-9 Months	47	15%	8	8%	11	12%	8	11%	74	13%
10-12 Months	20	6%	9	9%	3	3%	9	13%	41	7%
13-15 Months	20	6%	10	10%	6	7%	3	4%	39	7%
16-18 Months	7	2%	4	4%	3	3%	2	3%	16	3%
19-21 Months	11	3%	2	2%	5	6%	1	1%	19	3%
22-24 Months	17	5%	3	3%	3	3%	0	0%	23	4%
25+ Months	51	16%	15	14%	5	6%	9	13%	80	14%
Outcome										
Time To Exit / Transfer in 12-Month Followup²										
Exited within 30 Days	N/A	N/A	29	28%	22	25%	18	25%	69	26%
Exited between 30 and 60 Days	N/A	N/A	10	10%	13	15%	7	10%	30	11%
Exited between 61 and 365 Days	N/A	N/A	65	63%	54	61%	47	65%	166	63%
Exit Type										
Discharged from Custody										
Discharged to Permanency (Return to Parent, Relative, Adoption)	N/A	N/A	44	42%	N/A	N/A	N/A	N/A	N/A	N/A
Discharged to Adult Corrections/OCFS/Other JD Placement	N/A	N/A	12	12%	N/A	N/A	N/A	N/A	N/A	N/A
Other (e.g., Adulthood obtained, AWOL, Entered OMH Facility, etc.)	N/A	N/A	48	46%	N/A	N/A	N/A	N/A	N/A	N/A
Stepped down into lower level of care										
Certified Foster Home	N/A	N/A	N/A	N/A	12	13%	N/A	N/A	N/A	N/A
Approved Relative Foster Home	N/A	N/A	N/A	N/A	5	6%	N/A	N/A	N/A	N/A
Foster/Adoptive Home	N/A	N/A	N/A	N/A	10	11%	N/A	N/A	N/A	N/A
Missing Facility Information	N/A	N/A	N/A	N/A	1	1%	N/A	N/A	N/A	N/A
Trial Discharge	N/A	N/A	N/A	N/A	61	69%	N/A	N/A	N/A	N/A
Transferred to another CC facility / program										
Institution	N/A	N/A	N/A	N/A	N/A	N/A	26	36%	N/A	N/A
Group Residence	N/A	N/A	N/A	N/A	N/A	N/A	10	14%	N/A	N/A
Group Home	N/A	N/A	N/A	N/A	N/A	N/A	11	15%	N/A	N/A
AOBH	N/A	N/A	N/A	N/A	N/A	N/A	9	13%	N/A	N/A
Other ³	N/A	N/A	N/A	N/A	N/A	N/A	16	22%	N/A	N/A

Notes:
 1. This total number of returns includes children being absent or in trial discharge more than 14 days and returned to the same CC facility/program.
 2. Percentage in the "Total" columns is calculated based on total number of exit/transfer, excluding children remained in CC facility/program.
 3. Other may include: ACS' Children Center, Non-secure/Secure Detention Center, Psychiatric Center, Residential Treatment Facility, and Runaway Shelter.
 Prepared by OCFS Bureau of Research, Evaluation, and Performance Analytics; Data extracted from CONNECTIONS on 3/3/2021

Supplemental Table 5. Children Entered Congregate Care in 2019 and Stayed for 6 or 12 Consecutive Months--NYS

	Children Entered CC <= 12 and Stayed for 6 Consecutive Months		Children Entered CC >= 13 and Stayed for 12 Consecutive Months		Total	
	#	%	#	%	#	%
Total	346	18%	1,622	82%	1,968	100%
Demographics						
Gender						
Female	127	37%	792	49%	919	47%
Male	219	63%	830	51%	1,049	53%
Race/Ethnicity						
White/Caucasian	119	34%	346	21%	465	24%
Black/African American	103	30%	737	45%	840	43%
Hispanic/Latino	73	21%	390	24%	463	24%
Other	3	1%	22	1%	25	1%
Unknown	48	14%	127	8%	175	9%
Age at Entry into CC						
< 2	1	0%	0	0%	1	0%
2 - 5	15	4%	0	0%	15	1%
6 - 9	99	29%	0	0%	99	5%
10 - 12	231	67%	0	0%	231	12%
13	0	0%	124	8%	124	6%
14	0	0%	213	13%	213	11%
15	0	0%	321	20%	321	16%
16	0	0%	402	25%	402	20%
17+	0	0%	562	35%	562	29%
Current Movement into CC						
Facility upon Entry into CC						
Institution	248	72%	868	54%	1,116	57%
Group Residence	38	11%	135	8%	173	9%
Group Home	51	15%	421	26%	472	24%
AOBH	9	3%	198	12%	207	11%
Path of CC Entry						
New Admission	87	25%	367	23%	454	23%
Step Ups	121	35%	191	12%	312	16%
Lateral Transfers	125	36%	758	47%	883	45%
Return from Absence / TD ¹	13	4%	306	19%	319	16%
Case Type						
CW	324	94%	1,241	77%	1,565	80%
JD	13	4%	239	15%	252	13%
PINS	9	3%	142	9%	151	8%
Previous History						
Any Prior FC Placement (Lifetime)						
No	241	70%	1,048	65%	1,289	65%
Yes	105	30%	574	35%	679	35%
Any Prior CC experience (Lifetime)						
No	182	53%	479	30%	661	34%
Yes	164	47%	1,143	70%	1,307	66%

Notes:

1. This number includes children being absent or in trial discharge more than 14 days and returned to the same CC facility/program.

Prepared by OCFS Bureau of Research, Evaluation, and Performance Analytics; Data extracted from CONNECTIONS on 3/3/2021

Trend Table 1. New Admissions, Step-Ups, Lateral Transfers, and Returns from Absence/Trial Discharge to Congregate Care by Case Type from 2017 to 2020, NYS

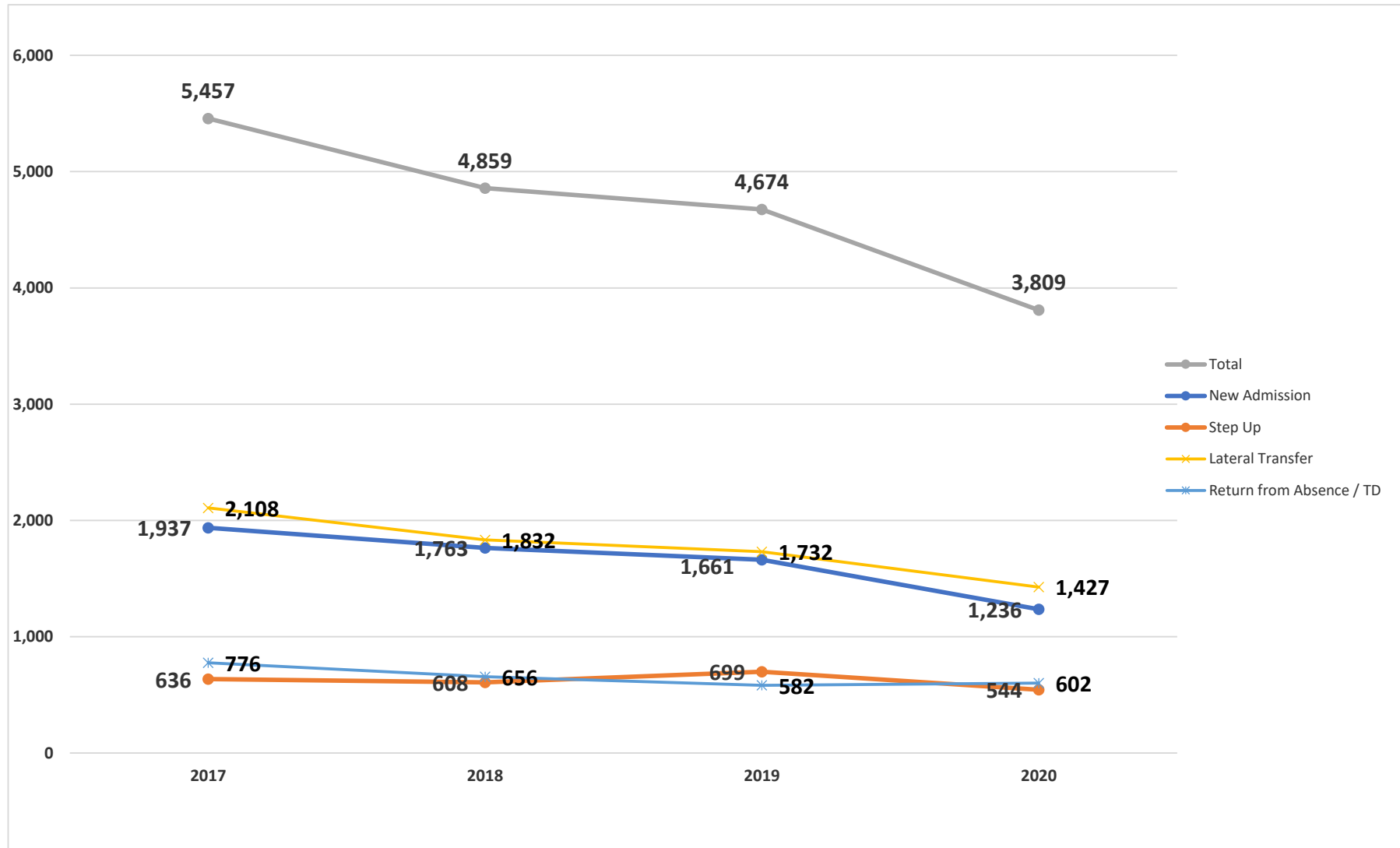
Years	Facility Type ¹	New Admissions				Step-Ups ²				Lateral Transfer ³				Return from Absence / TD ⁴				Total			
		CW	JD	PINS	Total	CW	JD	PINS	Total	CW	JD	PINS	Total	CW	JD	PINS	Total	CW	JD	PINS	Total
2017	Total	1,041	579	317	1,937	588	24	24	636	1,434	421	253	2,108	611	87	78	776	3,674	1,111	672	5,457
	Institution	511	376	240	1,127	346	10	14	370	683	243	169	1,095	460	52	61	573	2,000	681	484	3,165
	Group Residence	207	26	20	253	61	2	2	65	171	39	16	226	45	5	8	58	484	72	46	602
	Group Home	307	151	56	514	153	11	8	172	419	107	54	580	85	23	8	116	964	292	126	1382
	Agency Boarding Home	16	26	1	43	28	1	0	29	161	32	14	207	21	7	1	29	226	66	16	308
2018	Total	1,102	439	222	1,763	564	14	30	608	1,340	296	196	1,832	524	72	60	656	3,530	821	508	4,859
	Institution	403	297	170	870	331	10	22	363	588	177	119	884	384	50	46	480	1706	534	357	2,597
	Group Residence	447	22	13	482	64	0	1	65	200	19	12	231	51	2	1	54	762	43	27	832
	Group Home	230	105	34	369	136	4	7	147	387	72	43	502	78	16	10	104	831	197	94	1122
	Agency Boarding Home	22	15	5	42	33	0	0	33	165	28	22	215	11	4	3	18	231	47	30	308
2019	Total	1,015	459	187	1,661	651	21	27	699	1,327	256	149	1,732	488	52	42	582	3,481	788	405	4,674
	Institution	312	315	129	756	363	11	24	398	521	133	90	744	329	33	30	392	1525	492	273	2,290
	Group Residence	462	20	15	497	62	1	0	63	181	18	6	205	58	4	0	62	763	43	21	827
	Group Home	199	109	37	345	178	9	2	189	413	78	39	530	84	10	10	104	874	206	88	1168
	Agency Boarding Home	42	15	6	63	48	0	1	49	212	27	14	253	17	5	2	24	319	47	23	389
2020	Total	883	310	43	1,236	511	28	5	544	1,184	198	45	1,427	503	71	28	602	3,081	607	121	3,809
	Institution	231	218	15	464	250	13	3	266	384	90	15	489	313	40	12	365	1178	361	45	1,584
	Group Residence	474	14	4	492	59	0	0	59	177	18	2	197	55	5	2	62	765	37	8	810
	Group Home	150	68	23	241	160	14	1	175	465	71	21	557	88	21	5	114	863	174	50	1087
	Agency Boarding Home	28	10	1	39	42	1	1	44	158	19	7	184	47	5	9	61	275	35	18	328

Note:

1. Numbers in this table exclude any movements into the ACS' Children's Center.
2. Step-Ups include youth moved from foster homes and adoption subsidy homes into congregate care facility.
3. Movements from ACS' Children Center to other CC facility / program are counted as lateral transfers; this category also includes youth moved from other facility (e.g., Runaway Shelter, Residential Treatment Facility, Detention, Voluntary Community Residence, Adoption Subsidy Home, etc.) into congregate care facility.
4. Only being absent or in trial discharge more than 14 days and returning to the same CC facility / program are included.

Prepared by OCFS Bureau of Research, Evaluation, and Performance Analytics; Data extracted from CONNECTIONS on 3/3/2021

Figure 1. Movements into Congregate Care between 2017 and 2020, NYS



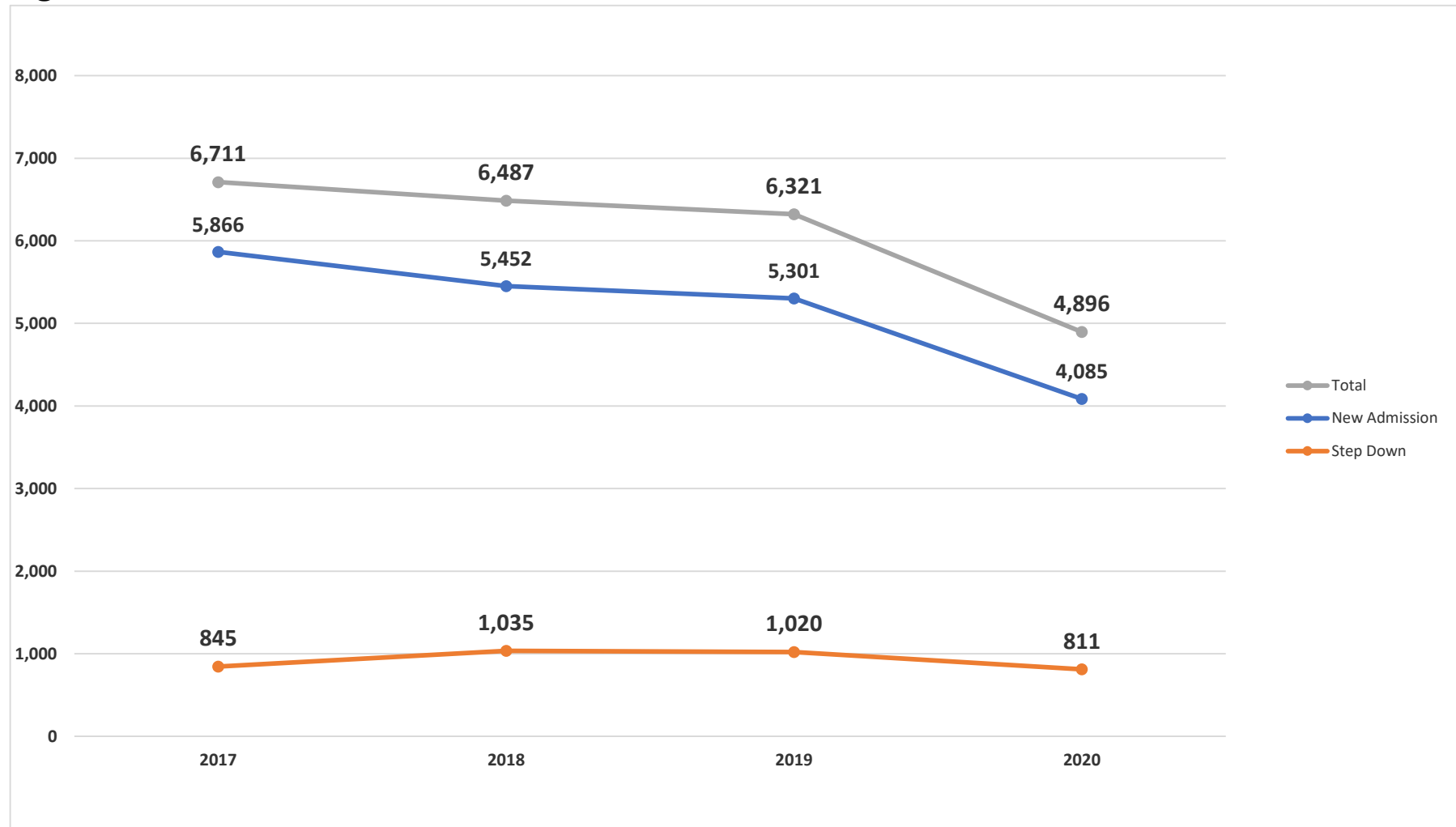
Prepared by OCFS Bureau of Research, Evaluation, and Performance Analytics; Data extracted from CONNECTIONS on 3/3/2021

Trend Table 2. New Admissions and Step-Downs into Foster Home by Case Type from 2017 to 2020, NYS

Years	Facility Type	New Admissions				Step-Downs				Total			
		CW	JD	PINS	Total	CW	JD	PINS	Total	CW	JD	PINS	Total
2017	Total	5,807	14	45	5,866	783	31	31	845	6,590	45	76	6,711
	Foster Boarding Home	4,123	13	45	4,181	704	28	29	761	4,827	41	74	4,942
	Approved Relative Home	1,684	1	0	1,685	79	3	2	84	1,763	4	2	1,769
2018	Total	5,401	14	37	5,452	982	31	22	1,035	6,383	45	59	6,487
	Foster Boarding Home	3,534	14	37	3,585	875	27	18	920	4,409	41	55	4,505
	Approved Relative Home	1,867	0	0	1,867	107	4	4	115	1,974	4	4	1,982
2019	Total	5,243	25	33	5,301	967	17	36	1,020	6,210	42	69	6,321
	Foster Boarding Home	3,121	25	31	3,177	820	14	33	867	3,941	39	64	4,044
	Approved Relative Home	2,122	0	2	2,124	147	3	3	153	2,269	3	5	2,277
2020	Total	4,073	10	2	4,085	778	27	6	811	4,851	37	8	4,896
	Foster Boarding Home	2,249	9	2	2,260	678	24	5	707	2,927	33	7	2,967
	Approved Relative Home	1,824	1	0	1,825	100	3	1	104	1,924	4	1	1,929

Prepared by OCFS Bureau of Research, Evaluation, and Performance Analytics; Data extracted from CONNECTIONS on 3/3/2021

Figure 2. Movements into Foster Homes between 2017 and 2020, NYS



Prepared by OCFS Bureau of Research, Evaluation, and Performance Analytics; Data extracted from CONNECTIONS on 3/3/2021