

Family First Prevention Services Act (FFPSA) Bubble Chart Data Packet Supplemental Tables

Table 1. Number of unique children with movements into CC program in 2019 and their movement types.

	# Movements	# Unique Children	Movement Types*									
			New Admission(s) Only		Step Up(s) Only		Lateral Transfer(s) Only		Return(s) from Absence / TD Only		Two or More Movement Types	
			N	%	N	%	N	%	N	%	N	%
Total	4,674	3,410	1,331	39%	445	13%	832	24%	249	7%	553	16%
New York City	1,978	1,405	533	38%	94	7%	403	29%	195	14%	180	13%
Rest of State	2,696	2,005	798	40%	351	18%	429	21%	54	3%	373	19%
ALBANY	113	89	39	44%	16	18%	18	20%	0	0%	16	18%
ALLEGANY	13	9	3	33%	1	11%	2	22%	0	0%	3	33%
BROOME	116	80	30	38%	10	13%	17	21%	1	1%	22	28%
CATTARAUGUS	15	13	7	54%	4	31%	1	8%	0	0%	1	8%
CAYUGA	23	18	9	50%	3	17%	3	17%	0	0%	3	17%
CHAUTAUQUA	38	30	12	40%	7	23%	7	23%	1	3%	3	10%
CHEMUNG	31	24	10	42%	3	13%	7	29%	0	0%	4	17%
CHENANGO	9	5	1	20%	0	0%	1	20%	0	0%	3	60%
CLINTON	7	7	2	29%	3	43%	2	29%	0	0%	0	0%
COLUMBIA	32	26	14	54%	2	8%	7	27%	1	4%	2	8%
CORTLAND	9	8	0	0%	5	63%	2	25%	0	0%	1	13%
DELAWARE	4	3	0	0%	2	67%	0	0%	0	0%	1	33%
DUTCHESS	80	63	31	49%	5	8%	15	24%	3	5%	9	14%
ERIE	345	260	125	48%	31	12%	43	17%	11	4%	50	19%
ESSEX	27	20	2	10%	10	50%	5	25%	0	0%	3	15%
FRANKLIN	5	5	0	0%	5	100%	0	0%	0	0%	0	0%
FULTON	15	11	4	36%	2	18%	2	18%	1	9%	2	18%
GENESEE	16	13	2	15%	6	46%	4	31%	0	0%	1	8%
GREENE	19	13	6	46%	0	0%	3	23%	1	8%	3	23%
HAMILTON	2	1	0	0%	0	0%	0	0%	0	0%	1	100%
HERKIMER	43	32	11	34%	8	25%	4	13%	2	6%	7	22%
JEFFERSON	11	7	1	14%	2	29%	2	29%	0	0%	2	29%
LEWIS	0	0	0	0%	0	0%	0	0%	0	0%	0	0%
LIVINGSTON	11	10	5	50%	0	0%	4	40%	0	0%	1	10%
MADISON	24	19	4	21%	4	21%	9	47%	0	0%	2	11%
MONROE	113	90	30	33%	25	28%	16	18%	2	2%	17	19%
MONTGOMERY	20	15	5	33%	4	27%	1	7%	1	7%	4	27%
NASSAU	163	104	50	48%	10	10%	13	13%	0	0%	31	30%
NIAGARA	41	36	13	36%	12	33%	6	17%	1	3%	4	11%
ONEIDA	86	65	35	54%	7	11%	11	17%	0	0%	12	18%
ONONDAGA	119	96	43	45%	12	13%	23	24%	2	2%	16	17%
ONTARIO	18	15	4	27%	5	33%	3	20%	0	0%	3	20%
ORANGE	137	91	18	20%	20	22%	30	33%	5	5%	18	20%
ORLEANS	7	6	1	17%	3	50%	1	17%	0	0%	1	17%
OSWEGO	35	29	14	48%	7	24%	4	14%	0	0%	4	14%
OTSEGO	8	8	4	50%	1	13%	3	38%	0	0%	0	0%
PUTNAM	9	7	2	29%	2	29%	0	0%	1	14%	2	29%
RENSSELAER	53	41	17	41%	3	7%	9	22%	2	5%	10	24%
ROCKLAND	4	4	3	75%	0	0%	1	25%	0	0%	0	0%
ST. LAWRENCE	45	35	10	29%	9	26%	6	17%	1	3%	9	26%
SARATOGA	35	26	15	58%	5	19%	1	4%	1	4%	4	15%
SCHENECTADY	80	57	14	25%	10	18%	23	40%	3	5%	7	12%
SCHOHARIE	19	15	4	27%	4	27%	4	27%	0	0%	3	20%
SCHUYLER	5	5	2	40%	0	0%	3	60%	0	0%	0	0%
SENECA	9	7	1	14%	2	29%	2	29%	0	0%	2	29%
STEUBEN	31	23	5	22%	2	9%	10	43%	0	0%	6	26%
SUFFOLK	330	219	96	44%	40	18%	33	15%	6	3%	44	20%
SULLIVAN	43	30	3	10%	7	23%	12	40%	2	7%	6	20%
TIOGA	12	11	0	0%	4	36%	6	55%	0	0%	1	9%
TOMPKINS	9	7	1	14%	2	29%	2	29%	0	0%	2	29%
ULSTER	46	37	14	38%	4	11%	13	35%	0	0%	6	16%
WARREN	12	10	6	60%	3	30%	1	10%	0	0%	0	0%
WASHINGTON	13	11	5	45%	3	27%	2	18%	0	0%	1	9%
WAYNE	4	4	1	25%	3	75%	0	0%	0	0%	0	0%
WESTCHESTER	170	125	59	47%	10	8%	32	26%	6	5%	18	14%
WYOMING	5	5	4	80%	1	20%	0	0%	0	0%	0	0%
YATES	5	3	1	33%	0	0%	0	0%	0	0%	2	67%
ST. REGIS	2	2	0	0%	2	100%	0	0%	0	0%	0	0%

*Percentage is calculated based on # unique children.

Prepared by OCFS Bureau of Research, Evaluation, and Performance Analytics; Data extracted from CONNECTIONS on 3/3/2021

Supplemental Table 1. New Admissions into Congregate Care in 2019 by Status at 1 Year Post CC Entry--ORANGE

	Remained in CC Program		Discharged from Custody		Stepped Down to Lower Level of Care		Transferred to Another CC Facility/Program		Total	
	#	%	#	%	#	%	#	%	#	%
Total	7	26%	12	44%	4	15%	4	15%	27	100%
Demographics										
Gender										
Female	3	43%	7	58%	3	75%	1	25%	14	52%
Male	4	57%	5	42%	1	25%	3	75%	13	48%
Race/Ethnicity										
White/Caucasian	1	14%	6	50%	1	25%	1	25%	9	33%
Black/African American	2	29%	2	17%	2	50%	0	0%	6	22%
Hispanic/Latino	4	57%	1	8%	1	25%	2	50%	8	30%
Other	0	0%	0	0%	0	0%	0	0%	0	0%
Unknown	0	0%	3	25%	0	0%	1	25%	4	15%
Age at Entry into CC										
< 2	0	0%	0	0%	0	0%	0	0%	0	0%
2 - 5	0	0%	0	0%	0	0%	0	0%	0	0%
6 - 9	0	0%	1	8%	0	0%	0	0%	1	4%
10 - 12	0	0%	3	25%	1	25%	0	0%	4	15%
13	1	14%	2	17%	0	0%	1	25%	4	15%
14	1	14%	1	8%	0	0%	1	25%	3	11%
15	4	57%	1	8%	1	25%	2	50%	8	30%
16	0	0%	3	25%	0	0%	0	0%	3	11%
17+	1	14%	1	8%	2	50%	0	0%	4	15%
Current Movement into CC										
Facility upon Entry into CC										
Institution	3	43%	5	42%	3	75%	3	75%	14	52%
Group Residence	3	43%	5	42%	1	25%	0	0%	9	33%
Group Home	0	0%	1	8%	0	0%	1	25%	2	7%
AOBH	1	14%	1	8%	0	0%	0	0%	2	7%
Case Type										
CW	5	71%	5	42%	4	100%	2	50%	16	59%
JD	1	14%	5	42%	0	0%	2	50%	8	30%
PINS	1	14%	2	17%	0	0%	0	0%	3	11%
Previous History										
Any Prior FC Placement (Lifetime)										
No	2	29%	7	58%	1	25%	2	50%	12	44%
Yes	5	71%	5	42%	3	75%	2	50%	15	56%
Any Prior CC experience (Lifetime)										
No	5	71%	8	67%	3	75%	2	50%	18	67%
Yes	2	29%	4	33%	1	25%	2	50%	9	33%
Outcome										
Time To Exit / Transfer in 12-Month Followup¹										
Exited within 30 Days	N/A	N/A	6	50%	1	25%	0	0%	7	35%
Exited between 30 and 60 Days	N/A	N/A	5	42%	0	0%	0	0%	5	25%
Exited between 61 and 365 Days	N/A	N/A	1	8%	3	75%	4	100%	8	40%
Exit Type										
Discharged from Custody										
Discharged to Permanency (Return to Parent, Relative, Adoption)	N/A	N/A	11	92%	N/A	N/A	N/A	N/A	N/A	N/A
Discharged to Adult Corrections/OCFS/Other JD Placement	N/A	N/A	1	8%	N/A	N/A	N/A	N/A	N/A	N/A
Other (e.g., Adulthood obtained, AWOL, Entered OMH Facility, etc.)	N/A	N/A	0	0%	N/A	N/A	N/A	N/A	N/A	N/A
Stepped down into lower level of care										
Certified Foster Home	N/A	N/A	N/A	N/A	2	50%	N/A	N/A	N/A	N/A
Approved Relative Foster Home	N/A	N/A	N/A	N/A	0	0%	N/A	N/A	N/A	N/A
Foster/Adoptive Home	N/A	N/A	N/A	N/A	2	50%	N/A	N/A	N/A	N/A
Missing Facility Information	N/A	N/A	N/A	N/A	0	0%	N/A	N/A	N/A	N/A
Trial Discharge	N/A	N/A	N/A	N/A	0	0%	N/A	N/A	N/A	N/A
Transferred to another CC facility / program										
Institution	N/A	N/A	N/A	N/A	N/A	N/A	2	50%	N/A	N/A
Group Residence	N/A	N/A	N/A	N/A	N/A	N/A	0	0%	N/A	N/A
Group Home	N/A	N/A	N/A	N/A	N/A	N/A	1	25%	N/A	N/A
AOBH	N/A	N/A	N/A	N/A	N/A	N/A	0	0%	N/A	N/A
Others ²	N/A	N/A	N/A	N/A	N/A	N/A	1	25%	N/A	N/A

Notes:

1. Percentage in the "Total" columns is calculated based on total number of exit/transfer, excluding children remained in CC facility/program.

2. Other may include: ACS' Children Center, Non-secure/Secure Detention Center, Psychiatric Center, Residential Treatment Facility, and Runaway Shelter.

Prepared by OCFS Bureau of Research, Evaluation, and Performance Analytics; Data extracted from CONNECTIONS on 3/3/2021

Supplemental Table 2. Step-Ups into Congregate Care in 2019 by Status at 1 Year Post CC Entry--ORANGE

	Remained in CC Program		Discharged from Custody		Stepped Down to Lower Level of Care		Transferred to Another CC Facility/Program		Total	
	#	%	#	%	#	%	#	%	#	%
Total	10	36%	0	0%	13	46%	5	18%	28	100%
Demographics										
Gender										
Female	6	60%	0	0%	6	46%	1	20%	13	46%
Male	4	40%	0	0%	7	54%	4	80%	15	54%
Race/Ethnicity										
White/Caucasian	4	40%	0	0%	3	23%	3	60%	10	36%
Black/African American	4	40%	0	0%	3	23%	2	40%	9	32%
Hispanic/Latino	2	20%	0	0%	3	23%	0	0%	5	18%
Other	0	0%	0	0%	0	0%	0	0%	0	0%
Unknown	0	0%	0	0%	4	31%	0	0%	4	14%
Age at Entry into CC										
< 2	0	0%	0	0%	0	0%	0	0%	0	0%
2 - 5	0	0%	0	0%	0	0%	0	0%	0	0%
6 - 9	1	10%	0	0%	2	15%	0	0%	3	11%
10 - 12	2	20%	0	0%	5	38%	2	40%	9	32%
13	1	10%	0	0%	2	15%	0	0%	3	11%
14	0	0%	0	0%	1	8%	1	20%	2	7%
15	1	10%	0	0%	0	0%	0	0%	1	4%
16	0	0%	0	0%	0	0%	2	40%	2	7%
17+	5	50%	0	0%	3	23%	0	0%	8	29%
Current Movement into CC										
Facility upon Entry into CC										
Institution	4	40%	0	0%	6	46%	4	80%	14	50%
Group Residence	2	20%	0	0%	3	23%	0	0%	5	18%
Group Home	1	10%	0	0%	2	15%	1	20%	4	14%
AOBH	3	30%	0	0%	2	15%	0	0%	5	18%
Case Type										
CW	10	100%	0	0%	13	100%	5	100%	28	100%
JD	0	0%	0	0%	0	0%	0	0%	0	0%
PINS	0	0%	0	0%	0	0%	0	0%	0	0%
Previous History										
Any Prior FC Placement (Lifetime)										
No	6	60%	0	0%	8	62%	5	100%	19	68%
Yes	4	40%	0	0%	5	38%	0	0%	9	32%
Any Prior CC experience (Lifetime)										
No	8	80%	0	0%	9	69%	3	60%	20	71%
Yes	2	20%	0	0%	4	31%	2	40%	8	29%
Facility Prior to Movement into Current CC										
Certified Foster Home	3	30%	0	0%	3	23%	1	20%	7	25%
Approved Relative Foster Home	3	30%	0	0%	2	15%	2	40%	7	25%
Foster/Adoptive Home	4	40%	0	0%	8	62%	2	40%	14	50%
Adoption Subsidy Home	0	0%	0	0%	0	0%	0	0%	0	0%
Unknown	0	0%	0	0%	0	0%	0	0%	0	0%
Length of Time in Foster Care										
< 1 Month	1	10%	0	0%	1	8%	0	0%	2	7%
1-3 Months	2	20%	0	0%	2	15%	3	60%	7	25%
4-6 Months	1	10%	0	0%	0	0%	0	0%	1	4%
7-9 Months	0	0%	0	0%	0	0%	0	0%	0	0%
10-12 Months	0	0%	0	0%	0	0%	0	0%	0	0%
13-15 Months	0	0%	0	0%	1	8%	0	0%	1	4%
16-18 Months	1	10%	0	0%	2	15%	0	0%	3	11%
19-21 Months	0	0%	0	0%	0	0%	0	0%	0	0%
22-24 Months	0	0%	0	0%	1	8%	0	0%	1	4%
25+ Months	5	50%	0	0%	6	46%	2	40%	13	46%
Length of Time in Previous Facility										
< 1 Month	4	40%	0	0%	6	46%	1	20%	11	39%
1-3 Months	3	30%	0	0%	3	23%	4	80%	10	36%
4-6 Months	1	10%	0	0%	1	8%	0	0%	2	7%
7-9 Months	0	0%	0	0%	0	0%	0	0%	0	0%
10-12 Months	0	0%	0	0%	1	8%	0	0%	1	4%
13-15 Months	0	0%	0	0%	0	0%	0	0%	0	0%
16-18 Months	0	0%	0	0%	0	0%	0	0%	0	0%
19-21 Months	0	0%	0	0%	0	0%	0	0%	0	0%
22-24 Months	0	0%	0	0%	1	8%	0	0%	1	4%
25+ Months	2	20%	0	0%	1	8%	0	0%	3	11%
Outcome										
Time To Exit / Transfer in 12-Month Followup¹										
Exited within 30 Days	N/A	N/A	0	0%	2	15%	0	0%	2	11%
Exited between 30 and 60 Days	N/A	N/A	0	0%	0	0%	0	0%	0	0%
Exited between 61 and 365 Days	N/A	N/A	0	0%	11	85%	5	100%	16	89%
Exit Type										
Discharged from Custody										
Discharged to Permanency (Return to Parent, Relative, Adoption)	N/A	N/A	0	0%	N/A	N/A	N/A	N/A	N/A	N/A
Discharged to Adult Corrections/OCFS/Other JD Placement	N/A	N/A	0	0%	N/A	N/A	N/A	N/A	N/A	N/A
Other (e.g., Adulthood obtained, AWOL, Entered OMH Facility, etc.)	N/A	N/A	0	0%	N/A	N/A	N/A	N/A	N/A	N/A
Stepped down into lower level of care										
Certified Foster Home	N/A	N/A	N/A	N/A	2	15%	N/A	N/A	N/A	N/A
Approved Relative Foster Home	N/A	N/A	N/A	N/A	2	15%	N/A	N/A	N/A	N/A
Foster/Adoptive Home	N/A	N/A	N/A	N/A	6	46%	N/A	N/A	N/A	N/A
Missing Facility Information	N/A	N/A	N/A	N/A	0	0%	N/A	N/A	N/A	N/A
Trial Discharge	N/A	N/A	N/A	N/A	3	23%	N/A	N/A	N/A	N/A
Transferred to another CC facility / program										
Institution	N/A	N/A	N/A	N/A	N/A	N/A	2	40%	N/A	N/A
Group Residence	N/A	N/A	N/A	N/A	N/A	N/A	1	20%	N/A	N/A
Group Home	N/A	N/A	N/A	N/A	N/A	N/A	1	20%	N/A	N/A
AOBH	N/A	N/A	N/A	N/A	N/A	N/A	1	20%	N/A	N/A
Others ²	N/A	N/A	N/A	N/A	N/A	N/A	0	0%	N/A	N/A

Notes:
 1. Percentage in the "Total" columns is calculated based on total number of exit/transfer, excluding children remained in CC facility/program.
 2. Other may include: ACS' Children Center, Non-secure/Secure Detention Center, Psychiatric Center, Residential Treatment Facility, and Runaway Shelter.
 Prepared by OCFs Bureau of Research, Evaluation, and Performance Analytics; Data extracted from CONNECTIONS on 3/3/2021

Supplemental Table 3. Lateral Movements into Congregate Care in 2019 by Status at 1 Year Post CC Entry--ORANGE

	Remained in CC Program		Discharged from Custody		Stepped Down to Lower Level of Care		Transferred to Another CC Facility/Program		Total	
	#	%	#	%	#	%	#	%	#	%
Total	36	51%	14	20%	10	14%	11	15%	71	100%
Demographics										
Gender										
Female	22	61%	3	21%	7	70%	7	64%	39	55%
Male	14	39%	11	79%	3	30%	4	36%	32	45%
Race/Ethnicity										
White/Caucasian	15	42%	4	29%	3	30%	1	9%	23	32%
Black/African American	7	19%	5	36%	2	20%	6	55%	20	28%
Hispanic/Latino	9	25%	4	29%	4	40%	4	36%	21	30%
Other	0	0%	0	0%	0	0%	0	0%	0	0%
Unknown	5	14%	1	7%	1	10%	0	0%	7	10%
Age at Lateral Transfer										
< 2	0	0%	0	0%	0	0%	0	0%	0	0%
2 - 5	0	0%	0	0%	0	0%	0	0%	0	0%
6 - 9	2	6%	0	0%	0	0%	0	0%	2	3%
10 - 12	4	11%	0	0%	1	10%	0	0%	5	7%
13	0	0%	3	21%	1	10%	0	0%	4	6%
14	4	11%	3	21%	0	0%	0	0%	7	10%
15	7	19%	2	14%	3	30%	2	18%	14	20%
16	6	17%	4	29%	1	10%	4	36%	15	21%
17+	13	36%	2	14%	4	40%	5	45%	24	34%
Current Movement into CC										
Facility upon Entry into CC										
Institution	11	31%	9	64%	3	30%	1	9%	24	34%
Group Residence	5	14%	1	7%	2	20%	1	9%	9	13%
Group Home	7	19%	2	14%	4	40%	5	45%	18	25%
AOBH	13	36%	2	14%	1	10%	4	36%	20	28%
Case Type										
CW	27	75%	3	21%	7	70%	11	100%	48	68%
JD	5	14%	6	43%	0	0%	0	0%	11	15%
PINS	4	11%	5	36%	3	30%	0	0%	12	17%
Previous History										
Any Prior FC Placement (Lifetime)										
No	22	61%	6	43%	8	80%	7	64%	43	61%
Yes	14	39%	8	57%	2	20%	4	36%	28	39%
Any Prior CC experience (Lifetime)										
No	4	11%	2	14%	3	30%	0	0%	9	13%
Yes	32	89%	12	86%	7	70%	11	100%	62	87%
Facility Prior to Movement into Current CC										
Institution	10	28%	7	50%	2	20%	3	27%	22	31%
Group Residence	4	11%	1	7%	1	10%	0	0%	6	8%
Group Home	4	11%	1	7%	1	10%	1	9%	7	10%
AOBH	5	14%	3	21%	2	20%	6	55%	16	23%
ACS' Children Center	0	0%	0	0%	0	0%	0	0%	0	0%
Others ¹	13	36%	2	14%	4	40%	1	9%	20	28%
Length of Time in Foster Care										
< 1 Month	4	11%	1	7%	3	30%	1	9%	9	13%
1-3 Months	3	8%	4	29%	0	0%	1	9%	8	11%
4-6 Months	4	11%	2	14%	1	10%	1	9%	8	11%
7-9 Months	0	0%	1	7%	0	0%	1	9%	2	3%
10-12 Months	1	3%	1	7%	0	0%	0	0%	2	3%
13-15 Months	2	6%	2	14%	0	0%	0	0%	4	6%
16-18 Months	0	0%	1	7%	0	0%	0	0%	1	1%
19-21 Months	1	3%	0	0%	0	0%	1	9%	2	3%
22-24 Months	3	8%	0	0%	0	0%	2	18%	5	7%
25+ Months	18	50%	2	14%	6	60%	4	36%	30	42%
Length of Time in Previous Facility										
< 1 Month	17	47%	3	21%	4	40%	3	27%	27	38%
1-3 Months	8	22%	6	43%	3	30%	7	64%	24	34%
4-6 Months	4	11%	3	21%	2	20%	0	0%	9	13%
7-9 Months	3	8%	1	7%	0	0%	0	0%	4	6%
10-12 Months	0	0%	0	0%	1	10%	0	0%	1	1%
13-15 Months	1	3%	0	0%	0	0%	1	9%	2	3%
16-18 Months	0	0%	1	7%	0	0%	0	0%	1	1%
19-21 Months	1	3%	0	0%	0	0%	0	0%	1	1%
22-24 Months	1	3%	0	0%	0	0%	0	0%	1	1%
25+ Months	1	3%	0	0%	0	0%	0	0%	1	1%
Outcome										
Time To Exit / Transfer in 12-Month Followup¹										
Exited within 30 Days	N/A	N/A	1	7%	1	10%	4	36%	6	17%
Exited between 30 and 60 Days	N/A	N/A	1	7%	0	0%	3	27%	4	11%
Exited between 61 and 365 Days	N/A	N/A	12	86%	9	90%	4	36%	25	71%
Exit Type										
Discharged from Custody										
Discharged to Permanency (Return to Parent, Relative , Adoption)	N/A	N/A	10	71%	N/A	N/A	N/A	N/A	N/A	N/A
Discharged to Adult Corrections/OCFS/Other JD Placement	N/A	N/A	4	29%	N/A	N/A	N/A	N/A	N/A	N/A
Other (e.g., Adulthood obtained, AWOL, Entered OMH Facility, etc.)	N/A	N/A	0	0%	N/A	N/A	N/A	N/A	N/A	N/A
Stepped down into lower level of care										
Certified Foster Home	N/A	N/A	N/A	N/A	1	10%	N/A	N/A	N/A	N/A
Approved Relative Foster Home	N/A	N/A	N/A	N/A	1	10%	N/A	N/A	N/A	N/A
Foster/Adoptive Home	N/A	N/A	N/A	N/A	0	0%	N/A	N/A	N/A	N/A
Missing Facility Information	N/A	N/A	N/A	N/A	1	10%	N/A	N/A	N/A	N/A
Trial Discharge	N/A	N/A	N/A	N/A	7	70%	N/A	N/A	N/A	N/A
Transferred to another CC facility / program										
Institution	N/A	N/A	N/A	N/A	N/A	N/A	1	9%	N/A	N/A
Group Residence	N/A	N/A	N/A	N/A	N/A	N/A	0	0%	N/A	N/A
Group Home	N/A	N/A	N/A	N/A	N/A	N/A	0	0%	N/A	N/A
AOBH	N/A	N/A	N/A	N/A	N/A	N/A	5	45%	N/A	N/A
Other ²	N/A	N/A	N/A	N/A	N/A	N/A	5	45%	N/A	N/A

Notes:

1. Percentage in the "Total" columns is calculated based on total number of exit/transfer, excluding children remained in CC facility/program.

2. Other may include: ACS' Children Center, Non-secure/Secure Detention Center, Psychiatric Center, Residential Treatment Facility, and Runaway Shelter.

Prepared by OCFS Bureau of Research, Evaluation, and Performance Analytics; Data extracted from CONNECTIONS on 3/3/2021

Supplemental Table 4. Returns to Congregate Care in 2019 by Status at 1 Year Post CC Entry--ORANGE

	Remained in CC Program		Discharged from Custody		Stepped Down to Lower Level of Care		Transferred to Another CC Facility/Program		Total	
	#	%	#	%	#	%	#	%	#	%
Total¹	5	45%	1	9%	3	27%	2	18%	11	100%
Demographics										
Gender										
Female	4	80%	0	0%	1	33%	2	100%	7	64%
Male	1	20%	1	100%	2	67%	0	0%	4	36%
Race/Ethnicity										
White/Caucasian	2	40%	1	100%	1	33%	0	0%	4	36%
Black/African American	0	0%	0	0%	1	33%	1	50%	2	18%
Hispanic/Latino	2	40%	0	0%	0	0%	1	50%	3	27%
Other	0	0%	0	0%	0	0%	0	0%	0	0%
Unknown	1	20%	0	0%	1	33%	0	0%	2	18%
Age at Return to CC										
< 2	0	0%	0	0%	0	0%	0	0%	0	0%
2 - 5	0	0%	0	0%	0	0%	0	0%	0	0%
6 - 9	0	0%	0	0%	0	0%	0	0%	0	0%
10 - 12	0	0%	1	100%	1	33%	1	50%	3	27%
13	0	0%	0	0%	0	0%	0	0%	0	0%
14	0	0%	0	0%	0	0%	0	0%	0	0%
15	1	20%	0	0%	0	0%	0	0%	1	9%
16	1	20%	0	0%	1	33%	1	50%	3	27%
17+	3	60%	0	0%	1	33%	0	0%	4	36%
Current Movement into CC										
Facility upon Entry into CC										
Institution	1	20%	1	100%	1	33%	0	0%	3	27%
Group Residence	3	60%	0	0%	2	67%	1	50%	6	55%
Group Home	1	20%	0	0%	0	0%	1	50%	2	18%
AOBH	0	0%	0	0%	0	0%	0	0%	0	0%
Case Type										
CW	5	100%	1	100%	3	100%	1	50%	10	91%
JD	0	0%	0	0%	0	0%	0	0%	0	0%
PINS	0	0%	0	0%	0	0%	1	50%	1	9%
Previous History										
Status prior to CC Entry										
Absence	5	100%	1	100%	2	67%	1	50%	9	82%
Trial Discharge	0	0%	0	0%	1	33%	1	50%	2	18%
Any Prior FC Placement (Lifetime)										
No	5	100%	1	100%	3	100%	0	0%	9	82%
Yes	0	0%	0	0%	0	0%	2	100%	2	18%
Any Prior CC experience (Lifetime)										
No	0	0%	0	0%	0	0%	0	0%	0	0%
Yes	5	100%	1	100%	3	100%	2	100%	11	100%
Length of Time in Foster Care										
< 1 Month	0	0%	0	0%	0	0%	0	0%	0	0%
1-3 Months	1	20%	0	0%	0	0%	0	0%	1	9%
4-6 Months	0	0%	0	0%	0	0%	1	50%	1	9%
7-9 Months	0	0%	0	0%	1	33%	0	0%	1	9%
10-12 Months	0	0%	0	0%	0	0%	0	0%	0	0%
13-15 Months	0	0%	0	0%	0	0%	0	0%	0	0%
16-18 Months	0	0%	1	100%	0	0%	0	0%	1	9%
19-21 Months	2	40%	0	0%	0	0%	0	0%	2	18%
22-24 Months	0	0%	0	0%	0	0%	0	0%	0	0%
25+ Months	2	40%	0	0%	2	67%	1	50%	5	45%
Length of Time in CC Facility prior to Absence / TD										
< 1 Month	0	0%	0	0%	0	0%	1	50%	1	9%
1-3 Months	4	80%	0	0%	0	0%	0	0%	4	36%
4-6 Months	0	0%	0	0%	1	33%	0	0%	1	9%
7-9 Months	0	0%	0	0%	0	0%	1	50%	1	9%
10-12 Months	0	0%	0	0%	0	0%	0	0%	0	0%
13-15 Months	0	0%	1	100%	0	0%	0	0%	1	9%
16-18 Months	0	0%	0	0%	0	0%	0	0%	0	0%
19-21 Months	0	0%	0	0%	1	33%	0	0%	1	9%
22-24 Months	0	0%	0	0%	0	0%	0	0%	0	0%
25+ Months	1	20%	0	0%	1	33%	0	0%	2	18%
Outcome										
Time To Exit / Transfer in 12-Month Followup²										
Exited within 30 Days	N/A	N/A	0	0%	0	0%	1	50%	1	17%
Exited between 30 and 60 Days	N/A	N/A	0	0%	0	0%	0	0%	0	0%
Exited between 61 and 365 Days	N/A	N/A	1	100%	3	100%	1	50%	5	83%
Exit Type										
Discharged from Custody										
Discharged to Permanency (Return to Parent, Relative, Adoption)	N/A	N/A	1	100%	N/A	N/A	N/A	N/A	N/A	N/A
Discharged to Adult Corrections/OCFS/Other JD Placement	N/A	N/A	0	0%	N/A	N/A	N/A	N/A	N/A	N/A
Other (e.g., Adulthood obtained, AWOL, Entered OMH Facility, etc.)	N/A	N/A	0	0%	N/A	N/A	N/A	N/A	N/A	N/A
Stepped down into lower level of care										
Certified Foster Home	N/A	N/A	N/A	N/A	1	33%	N/A	N/A	N/A	N/A
Approved Relative Foster Home	N/A	N/A	N/A	N/A	1	33%	N/A	N/A	N/A	N/A
Foster/Adoptive Home	N/A	N/A	N/A	N/A	0	0%	N/A	N/A	N/A	N/A
Missing Facility Information	N/A	N/A	N/A	N/A	0	0%	N/A	N/A	N/A	N/A
Trial Discharge	N/A	N/A	N/A	N/A	1	33%	N/A	N/A	N/A	N/A
Transferred to another CC facility / program										
Institution	N/A	N/A	N/A	N/A	N/A	N/A	0	0%	N/A	N/A
Group Residence	N/A	N/A	N/A	N/A	N/A	N/A	0	0%	N/A	N/A
Group Home	N/A	N/A	N/A	N/A	N/A	N/A	0	0%	N/A	N/A
AOBH	N/A	N/A	N/A	N/A	N/A	N/A	0	0%	N/A	N/A
Other ³	N/A	N/A	N/A	N/A	N/A	N/A	2	100%	N/A	N/A

Notes:
 1. This total number of returns includes children being absent or in trial discharge more than 14 days and returned to the same CC facility/program.
 2. Percentage in the "Total" columns is calculated based on total number of exit/transfer, excluding children remained in CC facility/program.
 3. Other may include: ACS' Children Center, Non-secure/Secure Detention Center, Psychiatric Center, Residential Treatment Facility, and Runaway Shelter.
 Prepared by OCFS Bureau of Research, Evaluation, and Performance Analytics; Data extracted from CONNECTIONS on 3/3/2021

Supplemental Table 5. Children Entered Congregate Care in 2019 and Stayed for 6 or 12 Consecutive Months--ORANGE

	Children Entered CC <= 12 and Stayed for 6 Consecutive Months		Children Entered CC >= 13 and Stayed for 12 Consecutive Months		Total	
	#	%	#	%	#	%
Total	11	18%	49	82%	60	100%
Demographics						
Gender						
Female	7	64%	30	61%	37	62%
Male	4	36%	19	39%	23	38%
Race/Ethnicity						
White/Caucasian	3	27%	19	39%	22	37%
Black/African American	3	27%	12	24%	15	25%
Hispanic/Latino	3	27%	14	29%	17	28%
Other	0	0%	0	0%	0	0%
Unknown	2	18%	4	8%	6	10%
Age at Entry into CC						
< 2	0	0%	0	0%	0	0%
2 - 5	0	0%	0	0%	0	0%
6 - 9	3	27%	0	0%	3	5%
10 - 12	8	73%	0	0%	8	13%
13	0	0%	2	4%	2	3%
14	0	0%	5	10%	5	8%
15	0	0%	13	27%	13	22%
16	0	0%	7	14%	7	12%
17+	0	0%	22	45%	22	37%
Current Movement into CC						
Facility upon Entry into CC						
Institution	8	73%	13	27%	21	35%
Group Residence	3	27%	10	20%	13	22%
Group Home	0	0%	9	18%	9	15%
AOBH	0	0%	17	35%	17	28%
Path of CC Entry						
New Admission	1	9%	7	14%	8	13%
Step Ups	4	36%	7	14%	11	18%
Lateral Transfers	6	55%	30	61%	36	60%
Return from Absence / TD ¹	0	0%	5	10%	5	8%
Case Type						
CW	11	100%	38	78%	49	82%
JD	0	0%	6	12%	6	10%
PINS	0	0%	5	10%	5	8%
Previous History						
Any Prior FC Placement (Lifetime)						
No	4	36%	33	67%	37	62%
Yes	7	64%	16	33%	23	38%
Any Prior CC experience (Lifetime)						
No	5	45%	14	29%	19	32%
Yes	6	55%	35	71%	41	68%

Notes:

1. This number includes children being absent or in trial discharge more than 14 days and returned to the same CC facility/program.

Prepared by OCFS Bureau of Research, Evaluation, and Performance Analytics; Data extracted from CONNECTIONS on 3/3/2021

Trend Table 1. New Admissions, Step-Ups, Lateral Transfers, and Returns from Absence/Trial Discharge to Congregate Care by Case Type from 2017 to 2020, ORANGE

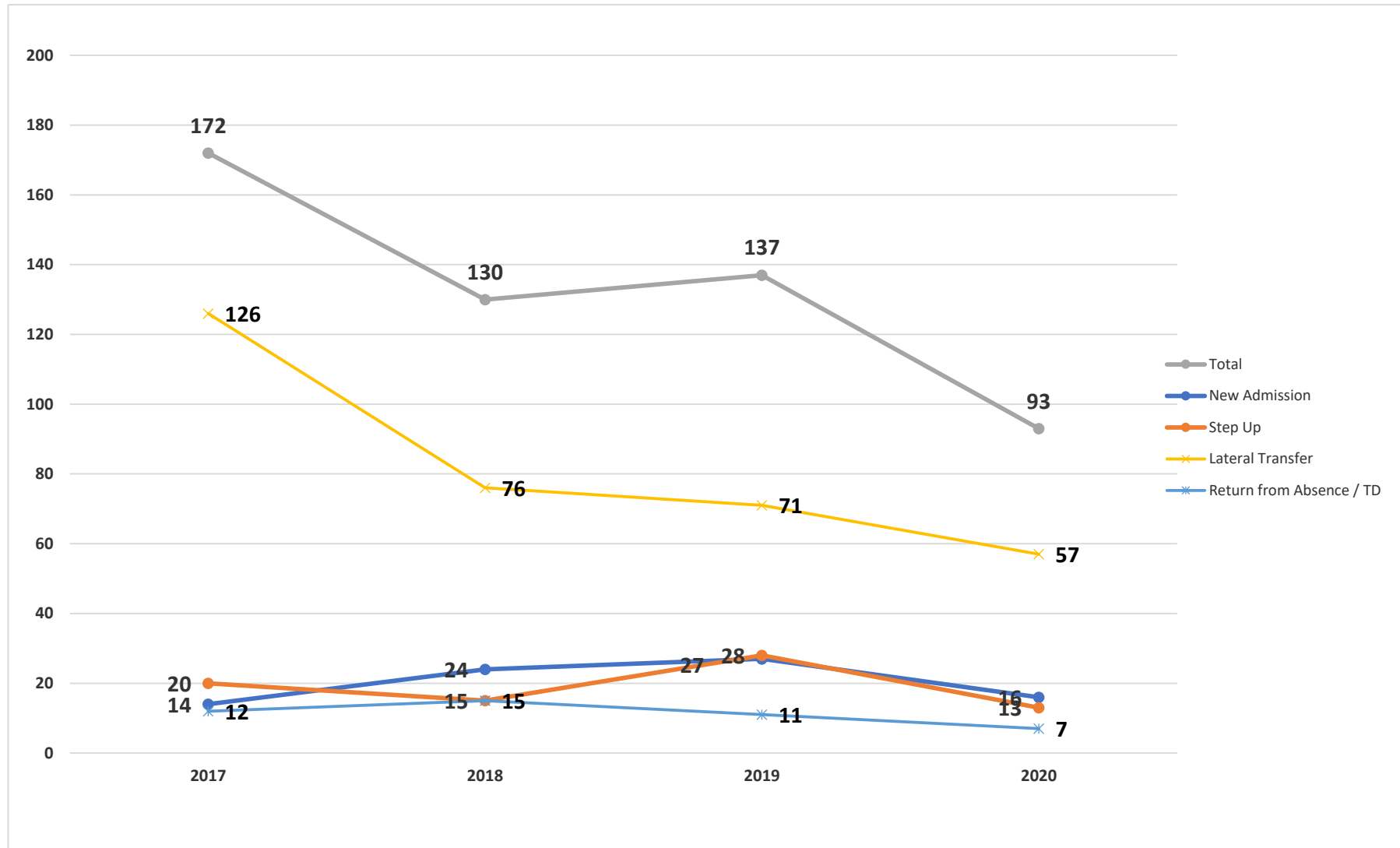
Years	Facility Type ¹	New Admissions				Step-Ups ²				Lateral Transfer ³				Return from Absence / TD ⁴				Total			
		CW	JD	PINS	Total	CW	JD	PINS	Total	CW	JD	PINS	Total	CW	JD	PINS	Total	CW	JD	PINS	Total
2017	Total	10	2	2	14	20	0	0	20	72	25	29	126	6	1	5	12	108	28	36	172
	Institution	2	0	0	2	14	0	0	14	28	16	11	55	3	1	1	5	47	17	12	76
	Group Residence	4	0	2	6	4	0	0	4	22	6	6	34	2	0	4	6	32	6	12	50
	Group Home	3	2	0	5	1	0	0	1	15	3	9	27	0	0	0	0	19	5	9	33
	Agency Boarding Home	1	0	0	1	1	0	0	1	7	0	3	10	1	0	0	1	10	0	3	13
2018	Total	18	4	2	24	15	0	0	15	50	11	15	76	11	3	1	15	94	18	18	130
	Institution	6	1	1	8	9	0	0	9	13	6	6	25	5	2	0	7	33	9	7	49
	Group Residence	10	1	1	12	3	0	0	3	15	2	6	23	4	0	0	4	32	3	7	42
	Group Home	1	2	0	3	1	0	0	1	14	0	3	17	1	1	1	3	17	3	4	24
	Agency Boarding Home	1	0	0	1	2	0	0	2	8	3	0	11	1	0	0	1	12	3	0	15
2019	Total	16	8	3	27	28	0	0	28	48	11	12	71	10	0	1	11	102	19	16	137
	Institution	10	4	0	14	14	0	0	14	10	5	9	24	3	0	0	3	37	9	9	55
	Group Residence	3	3	3	9	5	0	0	5	7	0	2	9	6	0	0	6	21	3	5	29
	Group Home	2	0	0	2	4	0	0	4	16	2	0	18	1	0	1	2	23	2	1	26
	Agency Boarding Home	1	1	0	2	5	0	0	5	15	4	1	20	0	0	0	0	21	5	1	27
2020	Total	13	3	0	16	12	1	0	13	49	8	0	57	7	0	0	7	81	12	0	93
	Institution	2	0	0	2	2	0	0	2	9	4	0	13	1	0	0	1	14	4	0	18
	Group Residence	6	3	0	9	4	0	0	4	1	0	0	1	3	0	0	3	14	3	0	17
	Group Home	1	0	0	1	2	0	0	2	20	3	0	23	2	0	0	2	25	3	0	28
	Agency Boarding Home	4	0	0	4	4	1	0	5	19	1	0	20	1	0	0	1	28	2	0	30

Note:

1. Numbers in this table exclude any movements into the ACS' Children's Center.
2. Step-Ups include youth moved from foster homes and adoption subsidy homes into congregate care facility.
3. Movements from ACS' Children Center to other CC facility / program are counted as lateral transfers; this category also includes youth moved from other facility (e.g., Runaway Shelter, Residential Treatment Facility, Detention, Voluntary Community Residence, Adoption Subsidy Home, etc.) into congregate care facility.
4. Only being absent or in trial discharge more than 14 days and returning to the same CC facility / program are included.

Prepared by OCFS Bureau of Research, Evaluation, and Performance Analytics; Data extracted from CONNECTIONS on 3/3/2021

Figure 1. Movements into Congregate Care between 2017 and 2020, ORANGE



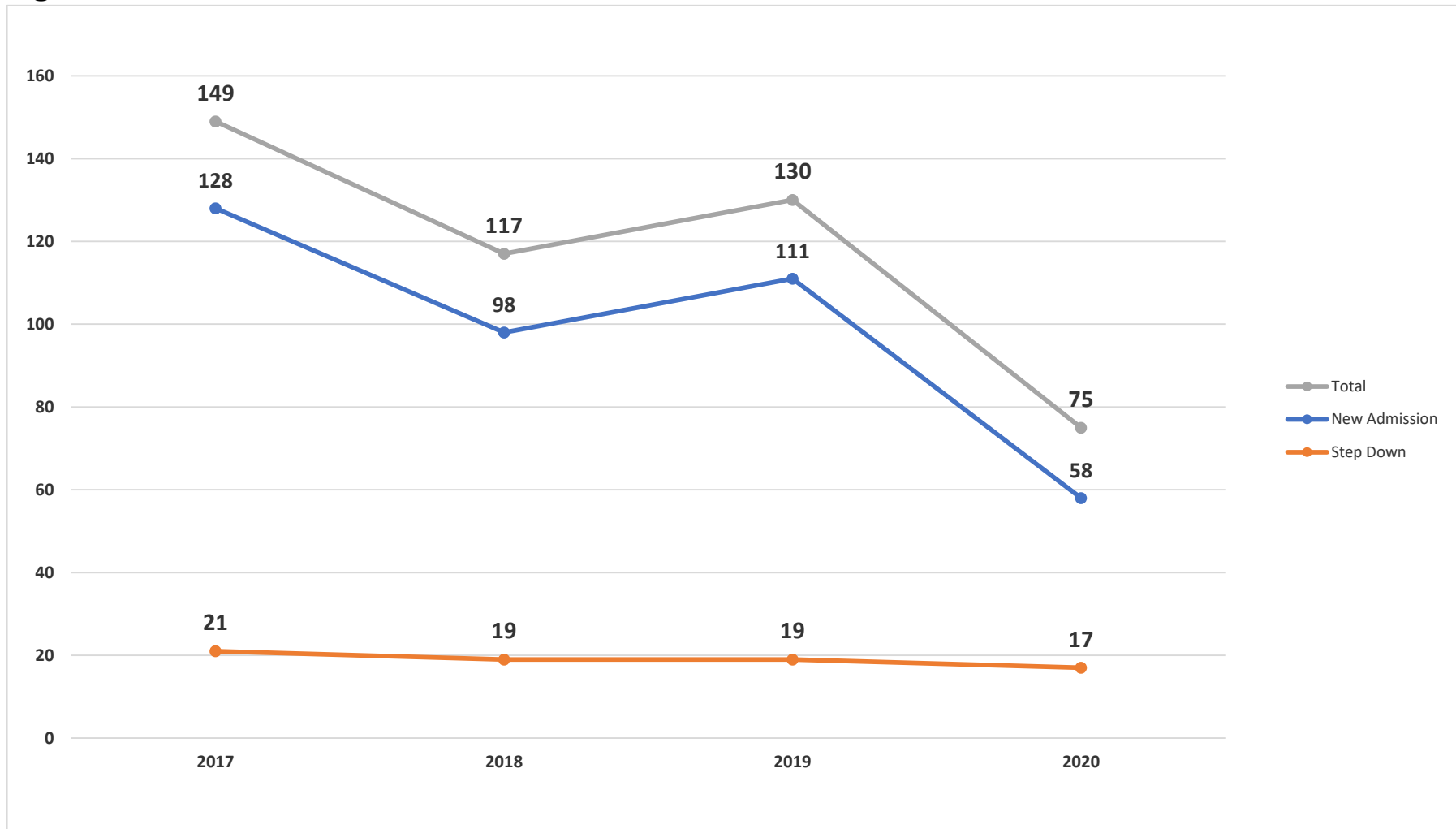
Prepared by OCFS Bureau of Research, Evaluation, and Performance Analytics; Data extracted from CONNECTIONS on 3/3/2021

Trend Table 2. New Admissions and Step-Downs into Foster Home by Case Type from 2017 to 2020, ORANGE

Years	Facility Type	New Admissions				Step-Downs				Total			
		CW	JD	PINS	Total	CW	JD	PINS	Total	CW	JD	PINS	Total
2017	Total	128	0	0	128	21	0	0	21	149	0	0	149
	Foster Boarding Home	103	0	0	103	14	0	0	14	117	0	0	117
	Approved Relative Home	25	0	0	25	7	0	0	7	32	0	0	32
2018	Total	98	0	0	98	19	0	0	19	117	0	0	117
	Foster Boarding Home	76	0	0	76	18	0	0	18	94	0	0	94
	Approved Relative Home	22	0	0	22	1	0	0	1	23	0	0	23
2019	Total	110	1	0	111	18	1	0	19	128	2	0	130
	Foster Boarding Home	74	1	0	75	10	0	0	10	84	1	0	85
	Approved Relative Home	36	0	0	36	8	1	0	9	44	1	0	45
2020	Total	58	0	0	58	17	0	0	17	75	0	0	75
	Foster Boarding Home	39	0	0	39	14	0	0	14	53	0	0	53
	Approved Relative Home	19	0	0	19	3	0	0	3	22	0	0	22

Prepared by OCFS Bureau of Research, Evaluation, and Performance Analytics; Data extracted from CONNECTIONS on 3/3/2021

Figure 2. Movements into Foster Homes between 2017 and 2020, ORANGE



Prepared by OCFS Bureau of Research, Evaluation, and Performance Analytics; Data extracted from CONNECTIONS on 3/3/2021