



## Citrix Presentation Server 4.0 – Selecting Screen Size

OCFS-AM is in the middle of upgrading our CONNECTIONS Citrix environment to the latest version of Citrix Presentation Server, which is 4.0. This project was one of the recommendations that came out of the CPIP initiative. Our efforts, in collaboration with Citrix Consulting Services and OFT, began on November 13<sup>th</sup> 2006 and we are scheduled to begin rebuilding our production server farm on Monday April 16<sup>th</sup>. The production rollout will last two weeks.

On Friday March 9<sup>th</sup>, we will be distributing a new Citrix PN Agent Client (version 9.23) to all workstations. This client is backwards compatible with the current version of Citrix XPe FR3. The new client when coupled with the new version of Citrix allows us to take advantage of some new printing and session reliability features.

The upgrade will present only minor changes to the CONNECTIONS users' experience. The names of the Published Applications will change as follows:

Connections Desktop 95 Percent → **Connections Desktop**

Connections Desktop Full Screen → **Connections Desktop**

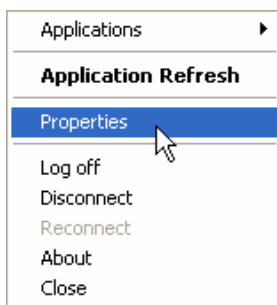
Connections Desktop SCR 95 Percent → **Connections Desktop SCR**

Connections Desktop SCR Full Screen → **Connections Desktop SCR**

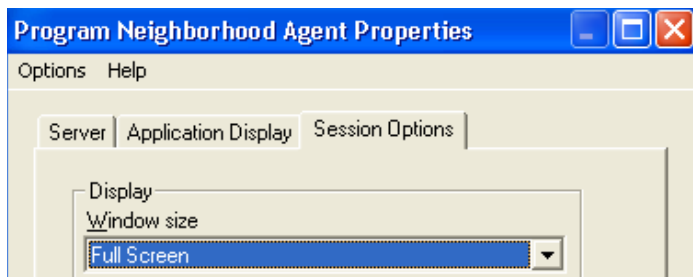
We will be reducing the number of published applications and the **default display size will now be 95%**. **Full Screen will still be available**, but the users must select that display size from their individual client.

Below are the instructions for selecting the desired display size prior to launching a session:

- ❑ **Right click the Citrix Icon** in your System Tray and go to properties

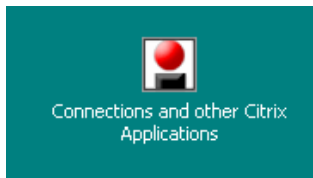


- ❑ Once in the properties, **click on the “Session Options” tab**
- ❑ In the session options, **change “Window Size” from Default to Full Screen & click OK.** In order to revert back to 95%, **Change “Window Size” to Default**

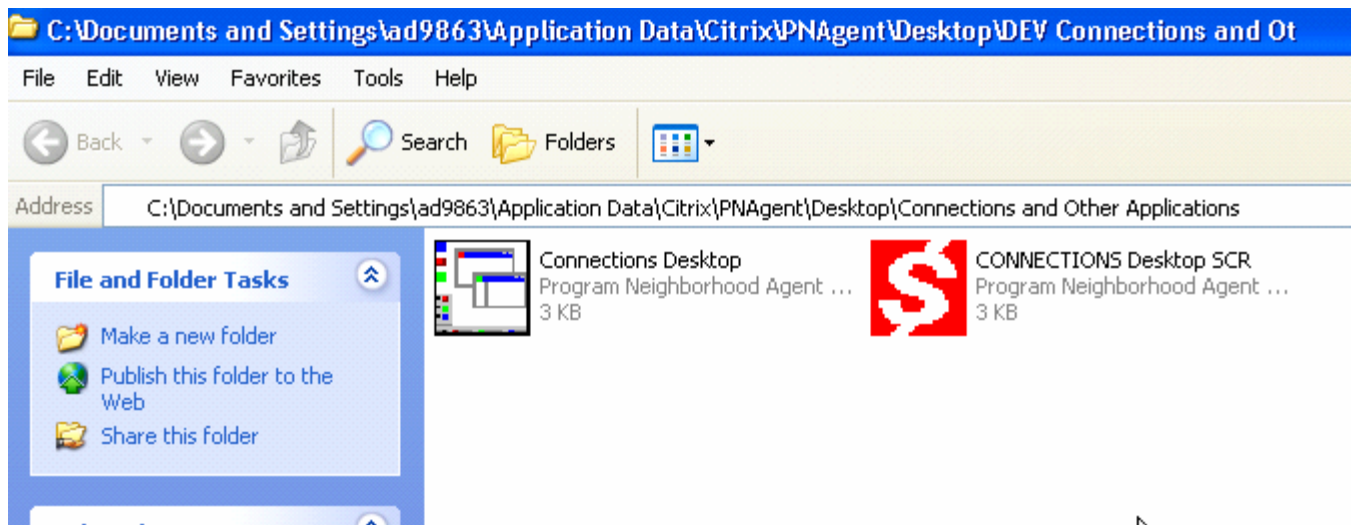




- ❑ In order to log into CONNECTIONS, **double click the Connections and Other Citrix Applications** icon on your desktop. This will provide you with a list of published applications to select from



- ❑ Once in the folder, double click the “CONNECTIONS Desktop” icon and CONNECTIONS should open up full screen.



**\*\*NOTE\*\*:** The screen resolution will be the same throughout the user’s session. If the user wants to change the screen size, they must log out of CONNECTIONS Citrix Session and follow the steps above

**If users are experiencing any issues using the PN Agent, please contact the NYS OFT Enterprise Help Desk (1-800-NYS-1323).**